

Vases table 210x100x73

by JM Ferrero

VASES Collection, is made up of flowerpots, furniture and lighting designed by the Valencian designer JM Ferrero. The shapes of the pieces draw inspiration from diamond cutting, resulting in clear-cut shapes with great style that create a visually striking impact.

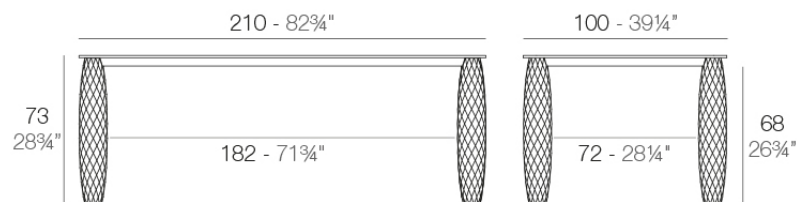


Info

Description

Made of polyethylene resin by rotational moulding. 100% Recyclable. Item suitable for indoor and outdoor use. Available in different finishes.

Weight: 54.31 Kg



VASES Mesa 210x100
VASES Dinning Table 82 3/4"x39 1/4"

Finishes

finishes

LACQUERED

Ref. 47079F



orange



notte blue



crema



modo green



purjai red



white



black



bronze



steel



anthracite



champany



red



khaki



taupe



ecru



beige

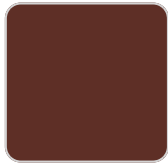
Lacquered Polyethylene

tabletops

HPL

Ref. 47079

VONDOM



purjai red



orange



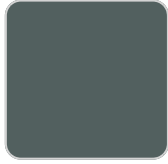
ice



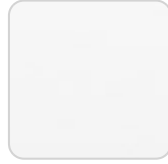
notte blue



crema



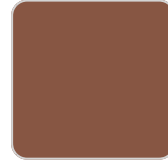
green



white



black



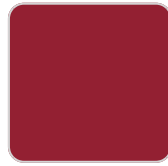
bronze



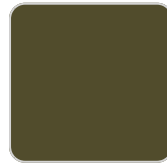
steel



anthracite



red



khaki



taupe



ecru



beige

HPL black edge

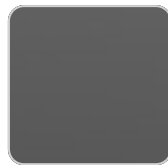
tabletops

HPL

Ref. VVAR00817



white



black



ecru

HPL black edge

Ambients

