

Noma table

by Javier Mariscal

The Noma Collection, designed by **Javier Mariscal** for the Spanish brand **Vondom**, is a group of outdoor items. The idea behind Noma was to create a new type of furniture by blending the functions of a planter and an outdoor table. The result is a **collection that is distinctive and versatile in nature.**

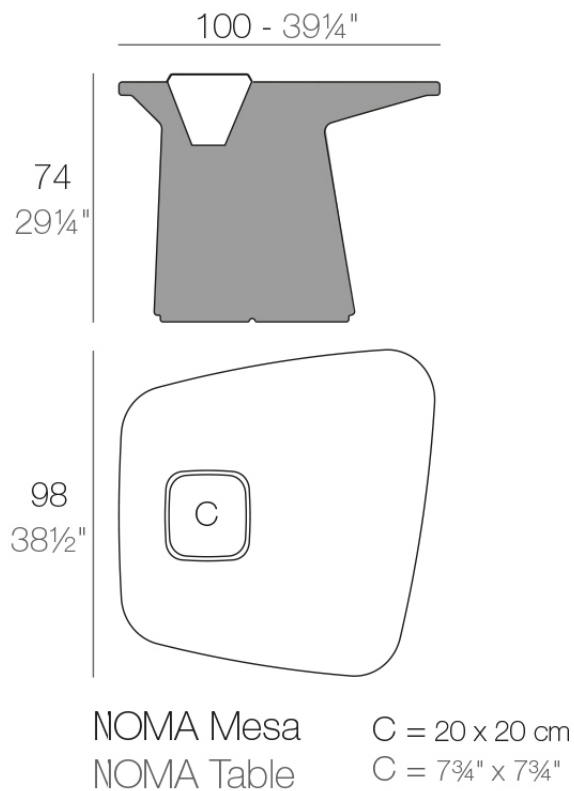


Info

Description

Made of polyethylene resin by rotational moulding. 100% Recyclable. Item suitable for indoor and outdoor use. Available in different finishes.

Weight: 22 Kg



Accessories

- **ICE BUCKET**

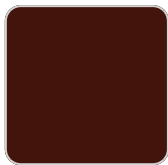
Ice bucket

Finishes

finishes

BASIC

Ref. 45100A



purjai red



orange



notte blue



crema



white



black



bronze



steel



anthracite



red



khaki



taupe



ecru



beige



ice



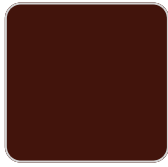
green

Matt Polyethylene

SELF-WATERING

Ref. 45100R

VONDOM



purjai red



orange



notte blue



crema



white



black



bronze



steel



anthracite



red



khaki



taupe



ecru



beige



ice



green

Self-watering system included in all planters except those with basic finish

LACQUERED

Ref. 45100F



purjai red



orange



notte blue



crema



modo green



white



black



bronze



steel



anthracite

VONDOM



champagne



red



khaki



taupe



ecru



beige

Lacquered Polyethylene

lighting

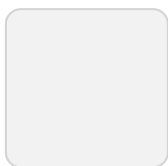
WHITE LED
Ref. 45100W



ice

White internally lit unit with LED technology. Available only in matte ice white finish.

RGBW LED
Ref. 45100L



ice

Unit with internal lighting with RGBW LED technology and remote control unit for switching colors. Available only in matte ice white finish. Remote control included.

VONDOM

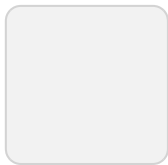
RGBW LED DMX
Ref. 45100D



ice

Unit with internal lighting with RGBW LED technology and remote control unit for switching colors. Also controlled by DMX-1024 (wireless), enabling communication between one or more products simultaneously via the DMX transmitter (not included). There are two options to choose from: Professional XLR DMX and Home WIFI DMX. (Remote control included).
Optional battery

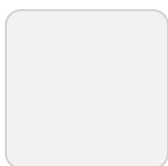
RGBW LED BATTERY
Ref. 45100Y



ice

Unit with internal lighting with battery-powered RGBW LED technology. Includes charger and remote control for switching colors and charger. Available only in matte ice white finish.

RGBW LED DMX BATTERY
Ref. 45100DY



ice

Unit with internal lighting with RGBW LED technology and remote control unit for

VONDOM

switching colors. Also controlled by DMX-1024 (wireless), enabling communication between one or more products simultaneously via the DMX transmitter (not included). There are two options to choose from: Professional XLR DMX and Home WIFI DMX. (Remote control included).

Ambients

