

## Noma bar table

by Javier Mariscal

The Noma Collection, designed by **Javier Mariscal** for the Spanish brand **Vondom**, is a group of outdoor items. The idea behind NOMA was to create a new type of furniture by blending the functions of a planter and an outdoor table. The result is a **collection that is distinctive and versatile in nature.**



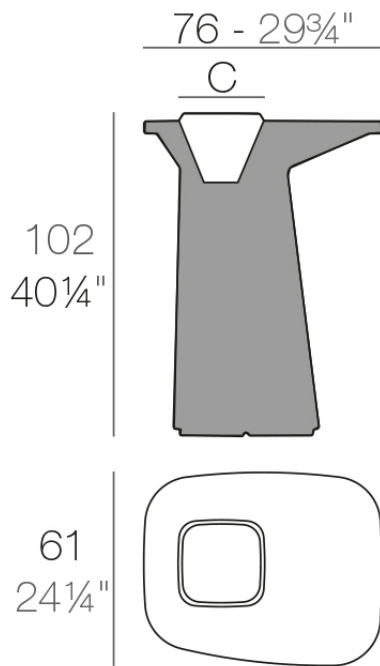
## Info

---

### Description

Made of polyethylene resin by rotational moulding. 100% Recyclable. Item suitable for indoor and outdoor use. Available in different finishes.

Weight: 15 Kg



NOMA Mesa Alta  
NOMA Bar Table

C = 20 x 20 cm

C = 7 3/4" x 7 3/4"

## Accessories

---

- **ICE BUCKET**

Ice bucket

## Finishes

---

### finishes

---

#### BASIC

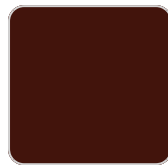
Ref. 45075A



crema



notte blue



purjai red



orange



white



black



bronze



steel



anthracite



red



khaki



taupe



ecru



beige



ice



green

#### Matt Polyethylene

#### SELF-WATERING

Ref. 45075R

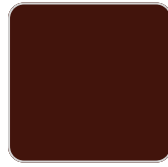
# VONDOM



crema



notte blue



purjai red



orange



white



black



bronze



steel



anthracite



red



khaki



taupe



ecru



beige



ice



green

Self-watering system included in all planters except those with basic finish

## LACQUERED

Ref. 45075F



crema



modo green



notte blue



purjai red



orange



white



black



bronze



steel



anthracite

# VONDOM



champagne



red



khaki



taupe



ecru



beige

Lacquered Polyethylene

## lighting

---

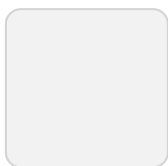
WHITE LED  
Ref. 45075W



ice

White internally lit unit with LED technology. Available only in matte ice white finish.

RGBW LED  
Ref. 45075L



ice

Unit with internal lighting with RGBW LED technology and remote control unit for switching colors. Available only in matte ice white finish. Remote control included.

# VONDOM

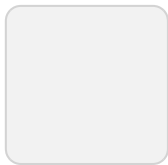
RGBW LED DMX  
Ref. 45075D



ice

Unit with internal lighting with RGBW LED technology and remote control unit for switching colors. Also controlled by DMX-1024 (wireless), enabling communication between one or more products simultaneously via the DMX transmitter (not included). There are two options to choose from: Professional XLR DMX and Home WIFI DMX. (Remote control included).  
Optional battery

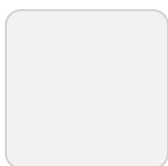
RGBW LED BATTERY  
Ref. 45075Y



ice

Unit with internal lighting with battery-powered RGBW LED technology. Includes charger and remote control for switching colors and charger. Available only in matte ice white finish.

RGBW LED DMX BATTERY  
Ref. 45075DY



ice

Unit with internal lighting with RGBW LED technology and remote control unit for

# VONDOM

switching colors. Also controlled by DMX-1024 (wireless), enabling communication between one or more products simultaneously via the DMX transmitter (not included). There are two options to choose from: Professional XLR DMX and Home WIFI DMX. (Remote control included).



## Ambients

---



# VONDOM

