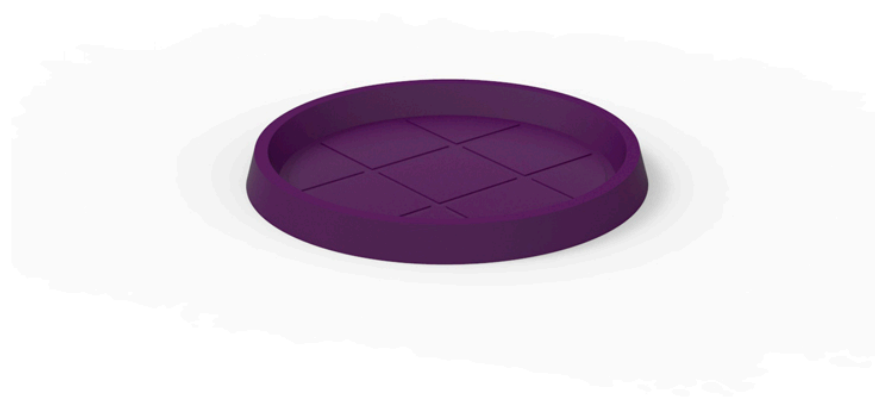


Round tray ø93

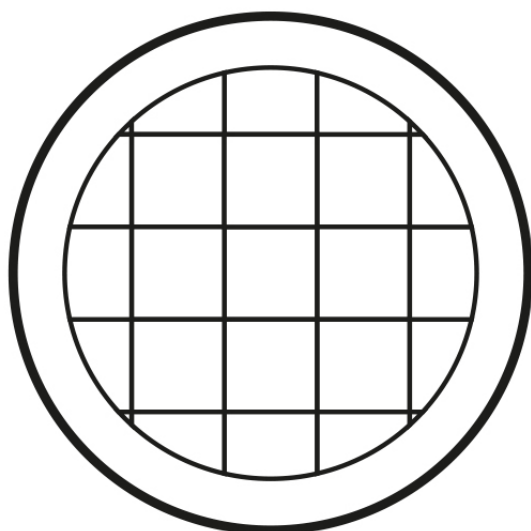


Info

Description

Pot made of polyethylene resin by rotational moulding. 100% Recyclable. Item suitable for indoor and outdoor use. Available in different finishes.

Weight: 3.5 Kg



Ø95 - Ø37½"

PLATO REDONDO Ø95cm
ROUND PLATE Ø37½"

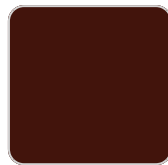
Finishes

finishes

SIMPLE
Ref. 42793



crema



purjai red



orange



notte blue



white



black



bronze



steel



anthracite



red



khaki



taupe



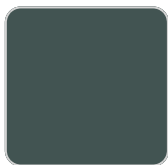
ecru



beige



ice



green

Matt finishes pot one wall

LACQUERED
Ref. 42793F

VONDOM



crema



modo green



purjai red



orange



notte blue



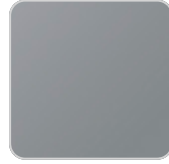
white



black



bronze



steel



anthracite



champany



red



khaki



taupe



ecru



beige

Lacquered Polyethylene

