

Round tray ø52

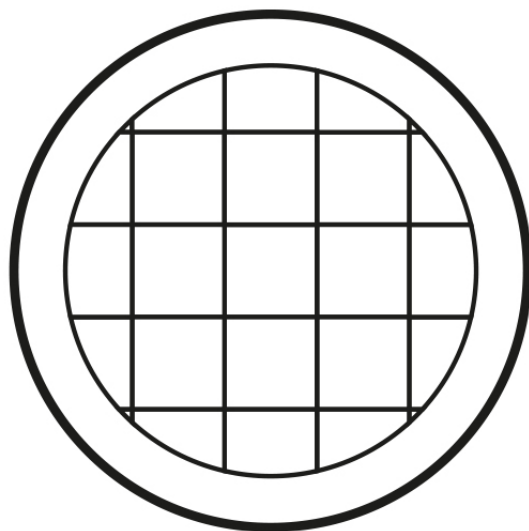


Info

Description

Pot made of polyethylene resin by rotational moulding. 100% Recyclable. Item suitable for indoor and outdoor use. Available in different finishes.

Weight: 0.2 Kg



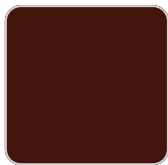
Ø52 - Ø20½"

PLATO REDONDO Ø52 cm
ROUND PLATE Ø20½"

Finishes

finishes

SIMPLE
Ref. 42752



purjai red



orange



notte blue



crema



white



black



bronze



steel



anthracite



red



khaki



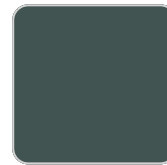
taupe



ecru



beige



green



ice

Matt finishes pot one wall

LACQUERED
Ref. 42752F

VONDOM



modo green



purjai red



orange



notte blue



crema



white



black



bronze



steel



anthracite



champany



red



khaki



taupe



ecru



beige

Lacquered Polyethylene

