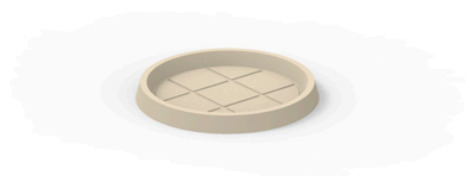


Round tray ø43

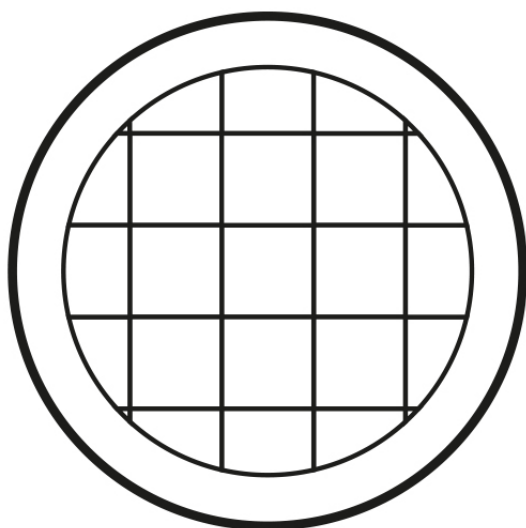


Info

Description

Pot made of polyethylene resin by rotational moulding. 100% Recyclable. Item suitable for indoor and outdoor use. Available in different finishes.

Weight: 0.13 Kg



Ø43 - Ø17"

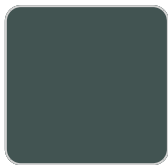
PLATO REDONDO Ø43 cm
ROUND PLATE Ø17"

Finishes

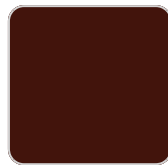
finishes

SIMPLE

Ref. 42743



green



purjai red



orange



ice



notte blue



crema



white



black



bronze



steel



anthracite



red



khaki



taupe



ecru



beige

Matt finishes pot one wall

LACQUERED

Ref. 42743F

VONDOM



purjai red



orange



notte blue



crema



white



black



bronze



steel



anthracite



red



khaki



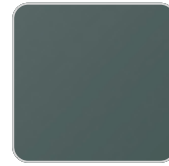
taupe



ecru



beige



modo green



champany

Lacquered Polyethylene

