

## Muro 10x30x20



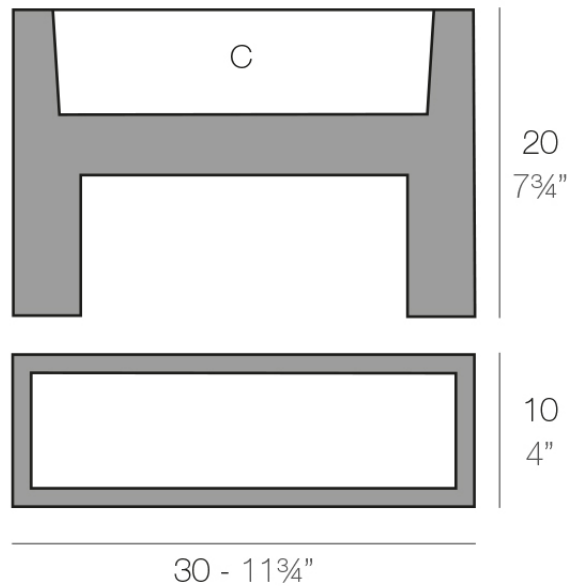
## Info

---

### Description

Pot made of polyethylene resin by rotational moulding. 100% Recyclable. Item suitable for indoor and outdoor use. Available in different finishes.

Weight: 0.8 Kg



MURO Nano 30 x 10 x 20 cm  
WALL Nano 11<sup>3</sup>/<sub>4</sub>" x 4" x 7<sup>3</sup>/<sub>4</sub>"

C = 1,5 L  
C = 1/2 gal

## Finishes

---

### finishes

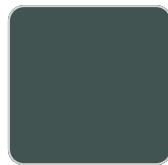
---

#### BASIC

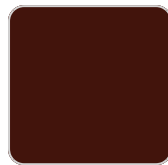
Ref. 42610A



crema



green



purjai red



orange



ice



notte blue



white



black



bronze



steel



anthracite



red



khaki



taupe



ecru



beige

#### Matt Polyethylene

#### LACQUERED

Ref. 42610F

# VONDOM



crema



purjai red



orange



notte blue



white



black



bronze



steel



anthracite



red



khaki



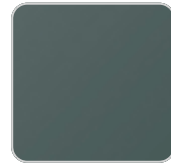
taupe



ecru



beige



modo green



champany

Lacquered Polyethylene

