

Curvada ø18x36

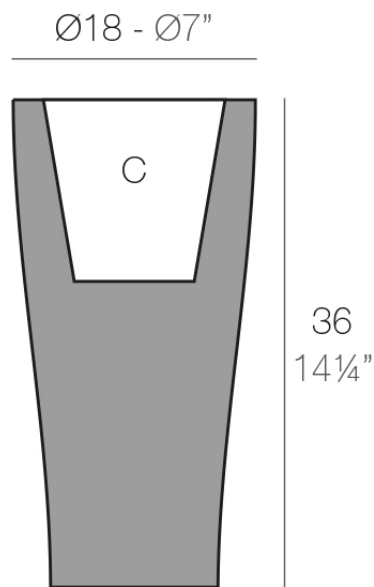


Info

Description

Pot made of polyethylene resin by rotational moulding. 100% Recyclable. Item suitable for indoor and outdoor use. Available in different finishes.

Weight: 0.95 Kg



Ø11,5 - Ø4½"

CURVADA Nano Ø18 x 36 cm

CURVADA Nano Ø7" x 14¼"

C = 2 L

C = 1 gal

Finishes

finishes

BASIC

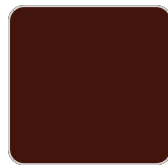
Ref. 42118A



notte blue



crema



purjai red



orange



white



black



bronze



steel



anthracite



red



khaki



taupe



ecru



beige



ice



green

Matt Polyethylene

LACQUERED

Ref. 42118F

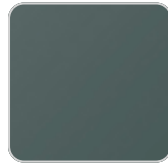
VONDOM



notte blue



crema



modo green



purjai red



orange



white



black



bronze



steel



anthracite



champany



red



khaki



taupe



ecru



beige

Lacquered Polyethylene

lighting

WHITE LED
Ref. 42118W



ice

White internally lit unit with LED technology. Available only in matte ice white finish.

