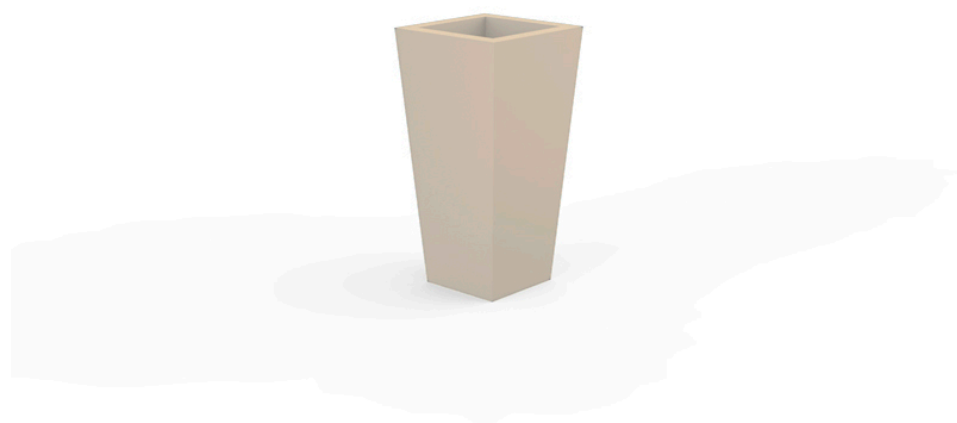


High square cone 18x18x36

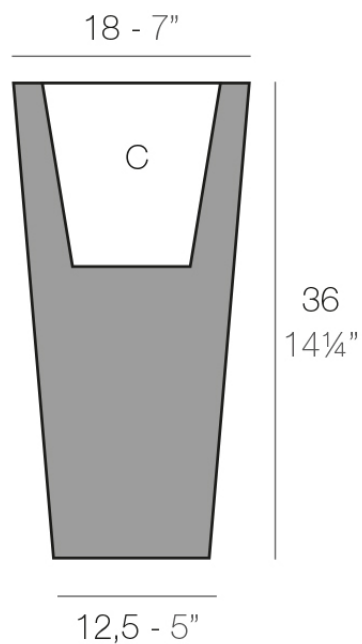


Info

Description

Pot made of polyethylene resin by rotational moulding. 100% Recyclable. Item suitable for indoor and outdoor use. Available in different finishes.

Weight: 1.4 Kg



CONO ALTO Nano 18 cm
HIGH CONE Nano 7"

C = 3 L
C = 1 gal

Finishes

finishes

BASIC

Ref. 41218A



white 2001



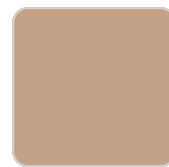
ecru 2003



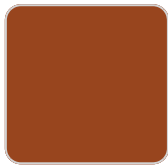
tortora 2004



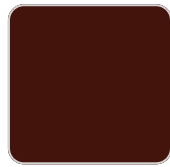
cream 2017



camel 2020



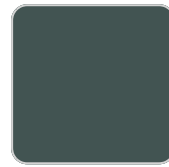
clay 2022



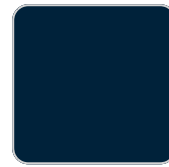
garnet 2015



brown 2008



green 2016



blue 2018



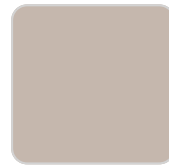
gray 2005



anthracite 2006



black 2002



ecru granite



cream granite



ice 2101

Matt Polyethylene

LACQUERED

Ref. 41218F

VONDOM



white 3101



ecru 3103



tortora 3104



cream 3117



garnet 3113



brown 3125



green 3116



blue 3118



gray 3105



anthracite 3106



black 3102

Lacquered Polyethylene

lighting

WHITE LED
Ref. 41218W



ice 2101

White internally lit unit with LED technology. Available only in matte ice white finish.

