

High cone ø14x28

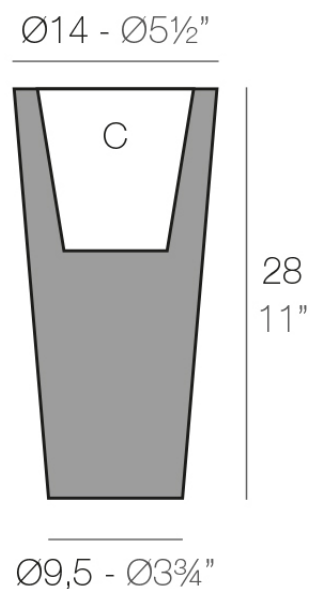


Info

Description

Pot made of polyethylene resin by rotational moulding. 100% Recyclable. Item suitable for indoor and outdoor use. Available in different finishes.

Weight: 0.55 Kg



CONO ALTO Nano $\text{Ø}14$ cm
HIGH CONE Nano $\text{Ø}5\frac{1}{2}"$

C = 1,5 L
C = $\frac{1}{2}$ gal

Finishes

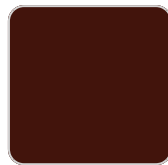
finishes

BASIC

Ref. 40514A



crema



purjai red



orange



notte blue



white



black



bronze



steel



anthracite



red



khaki



taupe



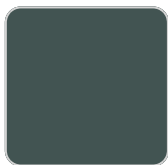
ecru



beige



ice



green

Matt Polyethylene

LACQUERED

Ref. 40514F

VONDOM



crema



modo green



purjai red



orange



notte blue



white



black



bronze



steel



anthracite



champany



red



khaki



taupe



ecru



beige

Lacquered Polyethylene

lighting

WHITE LED
Ref. 40514W



ice

White internally lit unit with LED technology. Available only in matte ice white finish.

Ambients

