

Planter ø40x35

Studio Vondom's extensive collection of indoor and outdoor planters offers timeless and minimalist designs that can help create unique and original atmospheres in homes, restaurants, and any other space.



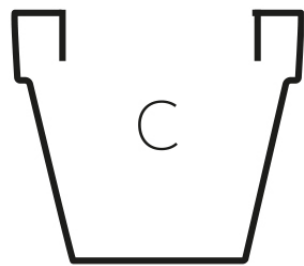
Info

Description

Pot made of polyethylene resin by rotational moulding. 100% Recyclable. Item suitable for indoor and outdoor use. Available in different finishes.

Weight: 1.5 Kg

$\overline{\text{Ø40 - Ø15}\frac{3}{4}\text{''}}$



35
13 $\frac{3}{4}$ ''

$\overline{\text{Ø24 - Ø9}\frac{1}{2}\text{''}}$

MACETA Ø40

MACETA Ø15 $\frac{3}{4}$ ''

C = 30 L

C = 8 gal

Finishes

finishes

SIMPLE

Ref. 40140



white 2001



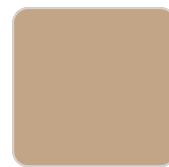
ecru 2003



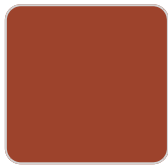
tortora 2004



cream 2017



camel 2020



clay 2022



garnet 2015



brown 2008



green 2016



blue 2018



gray 2005



anthracite 2006



black 2002



ecru granite



cream granite



ice 2101

Matt finishes pot one wall

LACQUERED

Ref. 40140F

VONDOM



white 3101



ecru 3103



tortora 3104



cream 3117



garnet 3113



brown 3125



green 3116



blue 3118



gray 3105



anthracite 3106



black 3102

Lacquered Polyethylene

