

## Tulum dining table

by Eugeni Quitllet

Tulum, designed by Eugeni Quitllet, is a collection of designer furniture to live freely anywhere in the world.



## Info

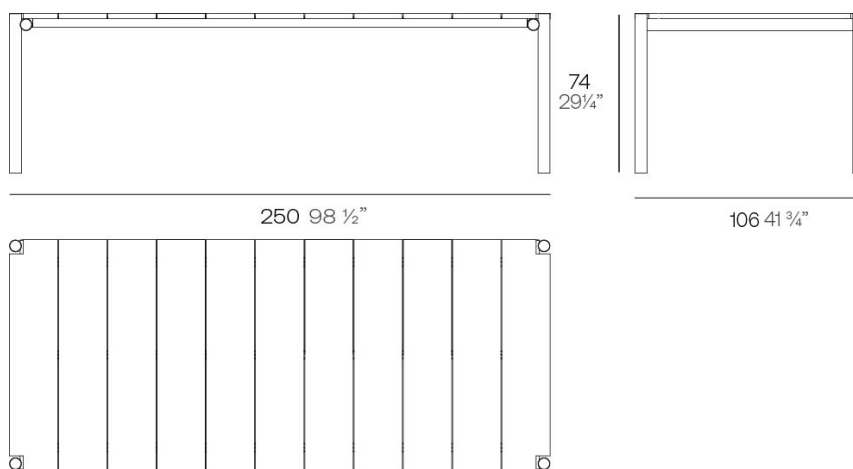
---

### Description

Eugeni Quitllet's dining table reflects the perfect combination of technology and noble materials that characterises the collection. Its aluminium structure, with carefully welded tubes treated with epoxy paint, ensures exceptional strength and

durability. The table top is made of elegant teak wood slats from Indonesia, adding a natural and distinguished touch.

Weight: 38 Kg



Tulum. Mesa Comedor  
Tulum. Dinnig Table  
ref. 65075

## Finishes

---

### finishes

---

#### ALUMINIUM

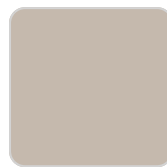
Ref. 65075E



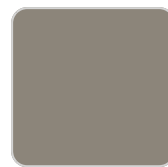
white



smoked



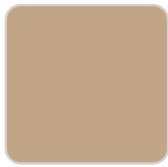
ecru



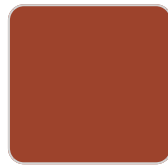
tortora



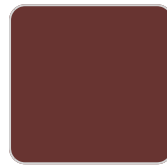
cream



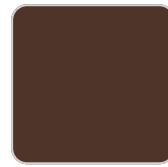
camel



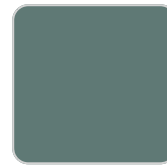
clay



garnet



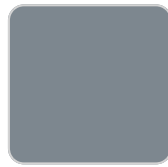
brown



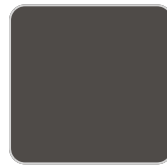
green



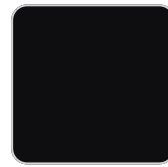
blue



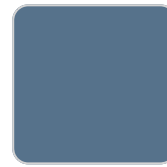
gray



anthracite



black



ocean

### tabletops

---

#### Teak

Ref. 65075TBL



natural teak



weathered teak

## Ambients

---

