

Mari-sol 3-legged double table base

by Eugeni Quitllet

The collection, designed by Eugeni Quitllet, combines advanced technology and captivating design. Mari-Sol adapts perfectly to any environment, whether on an urban terrace or in a garden by the sea. Its elegant shape and versatile character make it the ideal piece to embellish and optimize both indoor and outdoor spaces.



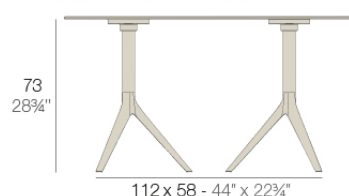
Info

Description

Extruded aluminum tube with cast aluminum base coated with epoxy baked painting. Item suitable for indoor and outdoor use. Table top not included.

Weight: 6.88 Kg

BASE 3 LEGS - BASE 3 PATAS



fixed top / fijo ref:65031

collapsible top / abatible ref:65031T

MARI-SOL BASE DOBLE 112x58 H73

MARI-SOL DOUBLE BASE 44x22 3/4" H28 3/4"

TABLE TOPS OPTIONS - OPCIONES SOBRES



119 x 69 cm

46 3/4" x 27 1/4"

Finishes

finishes

ALUMINIUM BASE

Ref. 65031T



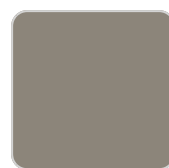
white



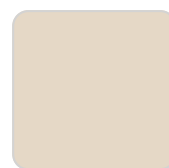
smoked



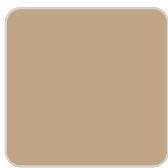
ecru



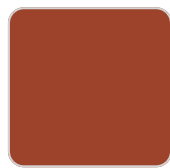
tortora



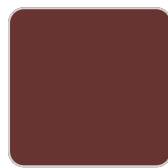
cream



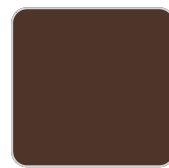
camel



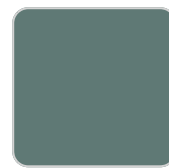
clay



garnet



brown



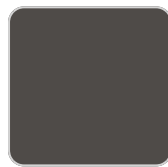
green



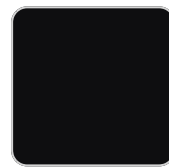
blue



gray



anthracite



black



ocean

Powder coated aluminum base with 90° collapsable attachment made of polyamide and fiber glass

tabletops

HPL

Ref. 66031

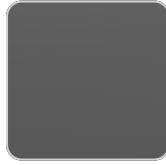
VONDOM



white 201



ecru 2003



black 2002

HPL black edge

