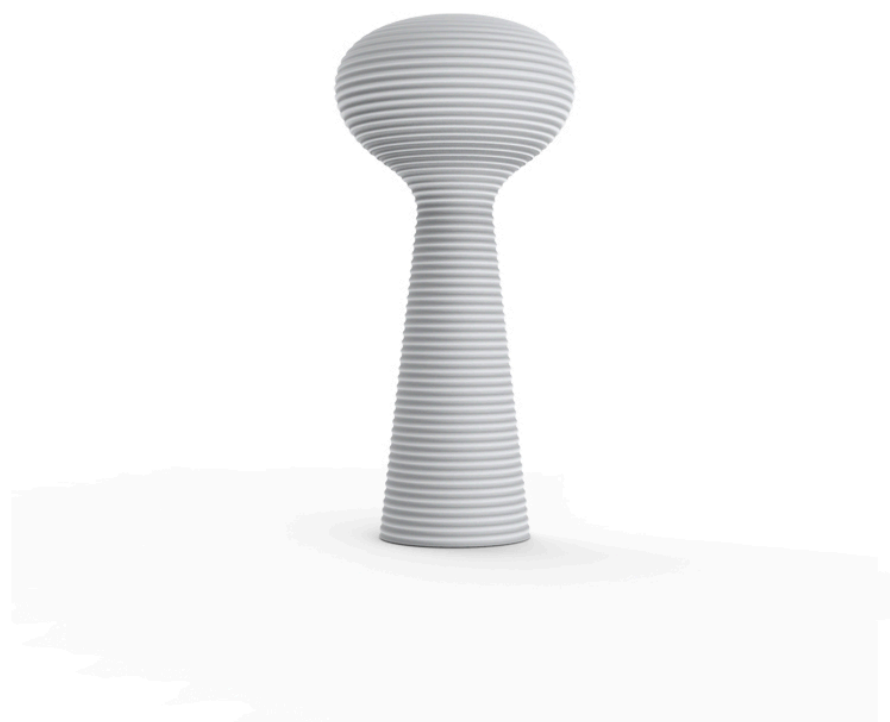


## Bloom lamp

by Eugeni Quitlet

Bloom lamp—planter collection, designed by Eugeni Quitlet for Vondom.  
Metaphorically, this collection **captures the flowering stage found in nature.**



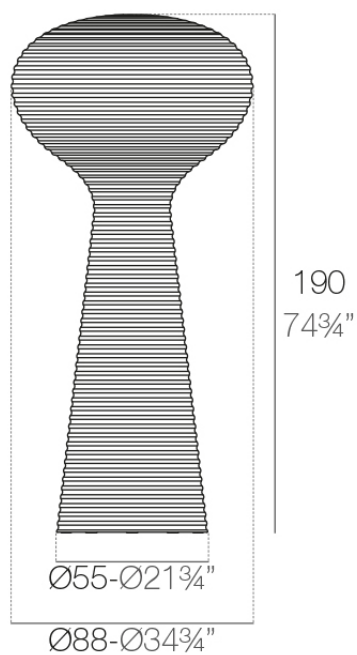
## Info

---

### Description

Made of polyethylene resin by rotational moulding. 100% Recyclable. Item suitable for indoor and outdoor use. Available in different finishes.

Weight: 41.13 Kg



BLOOM Lámpara  
BLOOM Lamp

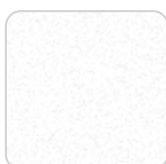
## Finishes

---

### lighting

---

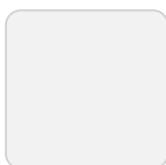
WHITE LED  
Ref. 65018W



ice

White internally lit unit with LED technology. Available only in matte ice white finish.

RGBW LED  
Ref. 65018L



ice

Unit with internal lighting with RGBW LED technology and remote control unit for switching colors. Available only in matte ice white finish. Remote control included.

RGBW LED DMX  
Ref. 65018D

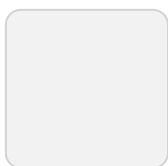


ice

Unit with internal lighting with RGBW LED technology and remote control unit for switching colors. Also controlled by DMX-1024 (wireless), enabling communication between one or more products simultaneously via the DMX transmitter (not included). There are two options to choose from: Professional XLR DMX and Home WIFI DMX. (Remote control included).  
Optional battery

## RGBW LED BATTERY

Ref. 65018Y

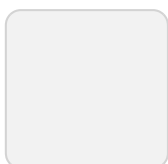


ice

Unit with internal lighting with battery-powered RGBW LED technology. Includes charger and remote control for switching colors and charger. Available only in matte ice white finish.

## RGBW LED DMX BATTERY

Ref. 65018DY



ice

Unit with internal lighting with RGBW LED technology and remote control unit for switching colors. Also controlled by DMX-1024 (wireless), enabling communication between one or more products simultaneously via the DMX

# VONDOM

transmitter (not included). There are two options to choose from: Professional XLR DMX and Home WIFI DMX. (Remote control included).

## Ambients

---

