

Mari-sol table base ø80 h:73cm

by Eugeni Quitllet

Mari-sol Collection, designed by Eugeni Quitllet for Vondom, is composed by a design table that **combines technology in its function with sensuality** in its shape. The answer for adorning terraces around the world.



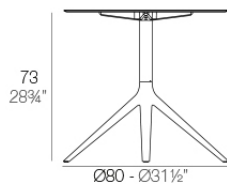
Info

Description

Extruded aluminum tube with cast aluminum base coated with epoxy baked painting. Item suitable for indoor and outdoor use. Table top not included.

Weight: 5.18 Kg

BASE 4 LEGS - BASE 4 PATAS



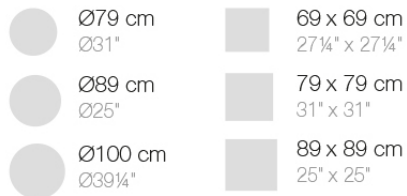
fixed top / fijo ref. 65016

fixed for glass / fijo para vidrio ref. 65016V

MARI-SOL BASE MESA Ø80 H73

MARI-SOL TABLE BASE Ø31 1/2" H28 3/4"

TABLE TOPS OPTIONS - OPCIONES SOBRES

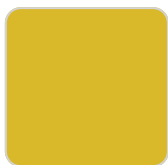


Finishes

finishes

ALUMINIUM BASE

Ref. 65016V



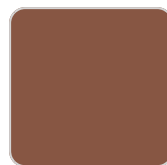
mostaza



white



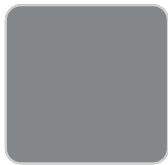
british gray



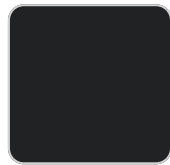
bronze



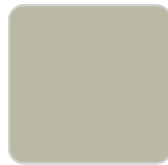
traffic gray



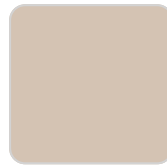
steel



black



ecru



crema



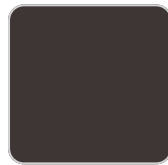
castoro fiber



red



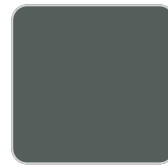
pistachio



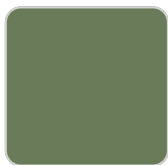
cacao



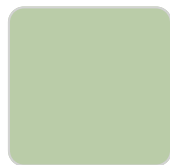
notte blue



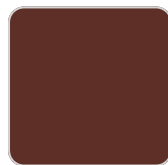
modo green



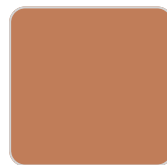
pickle



almond



purjai red



melon



sand

Powder coated aluminum base with non collapsable aluminum attachment powder coated, made exclusively for our glass tops.

Ambients

