

Mari-sol table base h:105cm

by Eugeni Quitllet

The collection, designed by Eugeni Quitllet, combines advanced technology and captivating design. Mari-Sol adapts perfectly to any environment, whether on an urban terrace or in a garden by the sea. Its elegant shape and versatile character make it the ideal piece to embellish and optimize both indoor and outdoor spaces.



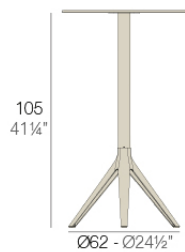
Info

Description

Extruded aluminum tube with cast aluminum base coated with epoxy baked painting. Item suitable for indoor and outdoor use. Table top not included.

Weight: 3.84 Kg

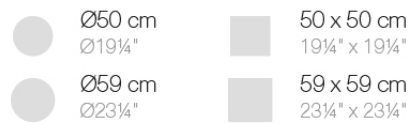
BASE 3 LEGS - BASE 3 PATAS



fixed top / fijo ref. 65011
collapsible top / abatible ref. 65011T
fixed for glass / fijo para vidrio ref. 65011V

MARI-SOL BASE MESA Ø62 H105
MARI-SOL TABLE BASE Ø24½" H41¼"

TABLE TOPS OPTIONS - OPCIONES SOBRES



Finishes

finishes

ALUMINIUM BASE

Ref. 65011V



white



smoked



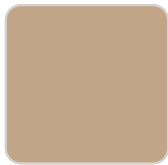
ecru



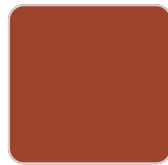
tortora



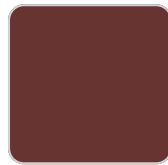
cream



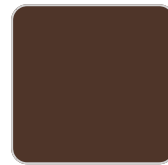
camel



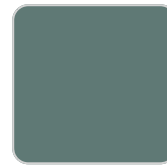
clay



garnet



brown



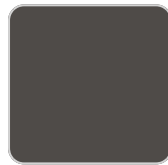
green



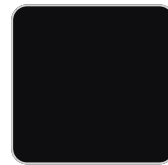
blue



gray



anthracite



black



ocean

Powder coated aluminum base with non collapsable aluminum attachment powder coated, made exclusively for our glass tops.

Ambients

