

## Mari-sol table base h:73cm

by Eugeni Quitllet

Mari-sol Collection, designed by Eugeni Quitllet for Vondom, is composed by a design table that **combines technology in its function with sensuality** in its shape. The answer for adorning terraces around the world.



## Info

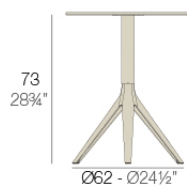
---

### Description

Extruded aluminum tube with cast aluminum base coated with epoxy baked painting. Item suitable for indoor and outdoor use. Table top not included.

Weight: 3.59 Kg

BASE 3 LEGS - BASE 3 PATAS



fixed top / fijo ref: 65010

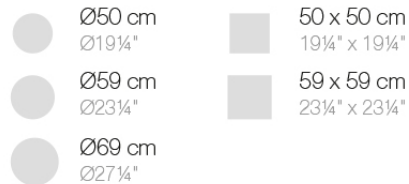
collapsible top / abatible ref: 65010T

fixed for glass / fijo para vidrio ref: 65010V

MARI-SOL BASE MESA Ø62 H73

MARI-SOL TABLE BASE Ø24 1/2" H28 3/4"

TABLE TOPS OPTIONS - OPCIONES SOBRES



## Finishes

---

### finishes

---

#### ALUMINIUM BASE

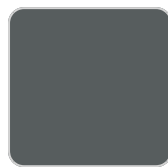
Ref. 65010V



white



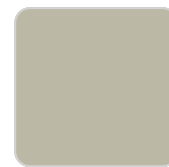
british gray



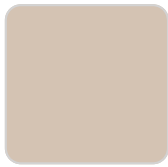
traffic gray



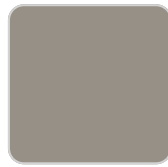
black



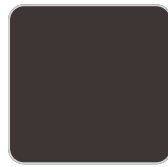
ecru



crema



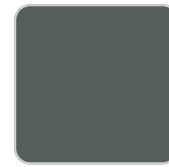
castoro fiber



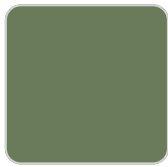
cacao



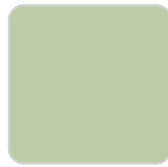
notte blue



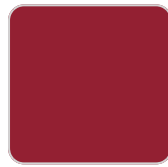
modo green



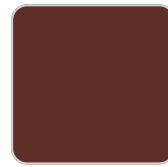
pickle



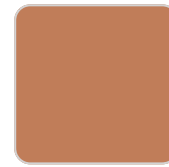
almond



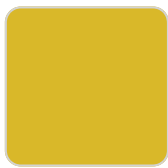
red



purjai red



melon



mostaza

Powder coated aluminum base with non collapsable aluminum attachment powder coated, made exclusively for our glass tops.

## Ambients

---

