

Biophilia chair

by Ross Lovegrove

Ross Lovegrove's Biophilia collection is a magnetic encounter between nature and design, where each piece seems to emerge from the earth with a life of its own. Inspired by the fluid forms of Art Nouveau and the organic majesty of Antoni Gaudí's Sagrada Família, Biophilia invites you to rediscover a connection with the natural environment through an aesthetic that breathes, flows and blends in with the space.

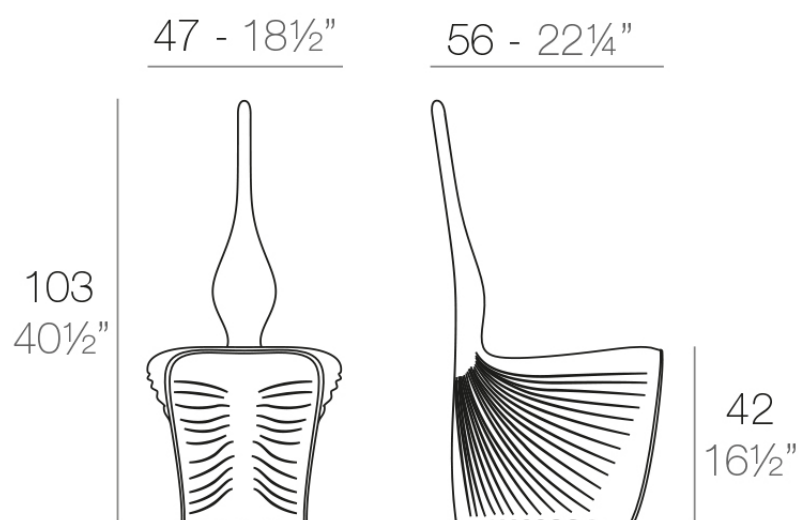


Info

Description

Made of polyethylene resin by rotational moulding. 100% Recyclable. Item suitable for indoor and outdoor use. Available in different finishes.

Weight: 3.65 Kg



BIOPHILIA Silla
BIOPHILIA Chair

Accessories

- **Fabric**

Fabric

Finishes

finishes

BASIC

Ref. 59001



white 2001



ecru 2003



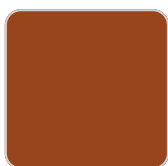
tortora 2004



cream 2017



camel 2020



clay 2022



garnet 2015



brown 2008



green 2016



blue 2018



gray 2005



anthracite 2006



black 2002



ecru granite



cream granite



ice 2101

Matt Polyethylene

LACQUERED

Ref. 59001F

VONDOM



white 3101



ecru 3103



tortora 3104



cream 3117



garnet 3113



brown 3125



green 3116



blue 3118



gray 3105



anthracite 3106



black 3102

Lacquered Polyethylene

TWO-TONE LACQUERED

Ref. 59001FP



black 2002

Two-tone lacquered Polyethylene

Ambients

