

Blow planter 100x100x75

by Stefano Giovannoni

Blow Collection, designed by **Stefano Giovannoni** for Vondom, comes from the willing to develop a **new family of in&out design products** in tune with the Pillow family but different in typology.

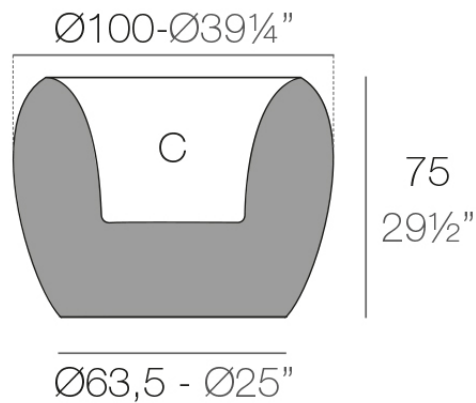


Info

Description

Pots made of polyethylene resin by rotational moulding. 100% Recyclable. Item suitable for indoor and outdoor use. Available in different finishes.

Weight: 25.08 Kg



BLOW Macetero 100x75
BLOW Planter 100x75

C = 104 L
C = $27\frac{1}{2}$ gal

Finishes

finishes

BASIC

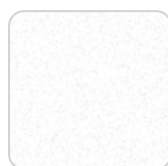
Ref. 55021A



purjai red



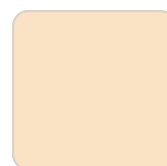
orange



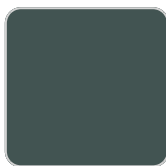
ice



notte blue



crema



green



white



black



bronze



steel



anthracite



red



khaki



taupe



ecru



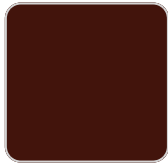
beige

Matt Polyethylene

SELF-WATERING

Ref. 55021R

VONDOM



purjai red



orange



ice



notte blue



crema



green



white



black



bronze



steel



anthracite



red



khaki



taupe



ecru



beige

Self-watering system included in all planters except those with basic finish

LACQUERED

Ref. 55021F



purjai red



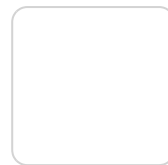
orange



notte blue



crema



white



black



bronze



steel



anthracite



red

VONDOM



khaki



taupe



ecru



beige



modo green



champany

Lacquered Polyethylene

lighting

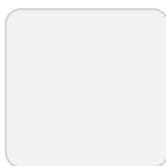
WHITE LED
Ref. 55021W



ice

White internally lit unit with LED technology. Available only in matte ice white finish.

RGBW LED
Ref. 55021L



ice

Unit with internal lighting with RGBW LED technology and remote control unit for switching colors. Available only in matte ice white finish. Remote control included.

RGBW LED DMX Ref. 55021D



ice

Unit with internal lighting with RGBW LED technology and remote control unit for switching colors. Also controlled by DMX-1024 (wireless), enabling communication between one or more products simultaneously via the DMX transmitter (not included). There are two options to choose from: Professional XLR DMX and Home WIFI DMX. (Remote control included).
Optional battery

RGBW LED BATTERY Ref. 55021Y



ice

Unit with internal lighting with battery-powered RGBW LED technology. Includes charger and remote control for switching colors and charger. Available only in matte ice white finish.

RGBW LED DMX BATTERY Ref. 55021DY



ice

Unit with internal lighting with RGBW LED technology and remote control unit for

VONDOM

switching colors. Also controlled by DMX-1024 (wireless), enabling communication between one or more products simultaneously via the DMX transmitter (not included). There are two options to choose from: Professional XLR DMX and Home WIFI DMX. (Remote control included).

Ambients

