

Blow planter 80x80x80

by Stefano Giovannoni

Blow Collection, designed by **Stefano Giovannoni** for Vondom, comes from the willing to develop a **new family of in&out design products** in tune with the Pillow family but different in typology.

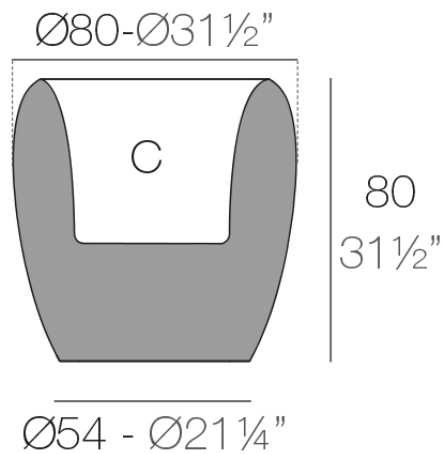


Info

Description

Pots made of polyethylene resin by rotational moulding. 100% Recyclable. Item suitable for indoor and outdoor use. Available in different finishes.

Weight: 20.08 Kg



BLOW Macetero 80

C = 68 L

BLOW Planter 80

C = 18 gal

Finishes

finishes

BASIC

Ref. 55019A



purjai red



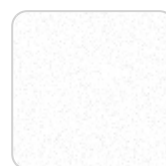
notte blue



orange



crema



white



black



bronze



steel



anthracite



red



khaki



taupe



ecru



beige



ice



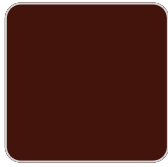
green

Matt Polyethylene

SELF-WATERING

Ref. 55019R

VONDOM



purjai red



notte blue



orange



crema



white



black



bronze



steel



anthracite



red



khaki



taupe



ecru



beige



ice



green

Self-watering system included in all planters except those with basic finish

LACQUERED

Ref. 55019F



modo green



purjai red



notte blue



orange



crema



white



black



bronze



steel



anthracite



champagne



red



khaki



taupe



ecru



beige

Lacquered Polyethylene

lighting

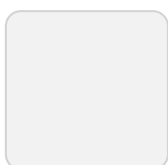
WHITE LED
Ref. 55019W



ice

White internally lit unit with LED technology. Available only in matte ice white finish.

RGBW LED
Ref. 55019L

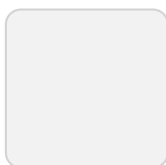


ice

Unit with internal lighting with RGBW LED technology and remote control unit for switching colors. Available only in matte ice white finish. Remote control included.

RGBW LED DMX

Ref. 55019D

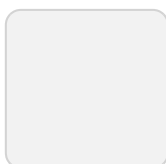


ice

Unit with internal lighting with RGBW LED technology and remote control unit for switching colors. Also controlled by DMX-1024 (wireless), enabling communication between one or more products simultaneously via the DMX transmitter (not included). There are two options to choose from: Professional XLR DMX and Home WIFI DMX. (Remote control included).
Optional battery

RGBW LED BATTERY

Ref. 55019Y

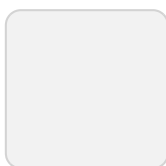


ice

Unit with internal lighting with battery-powered RGBW LED technology. Includes charger and remote control for switching colors and charger. Available only in matte ice white finish.

RGBW LED DMX BATTERY

Ref. 55019DY



ice

Unit with internal lighting with RGBW LED technology and remote control unit for

VONDOM

switching colors. Also controlled by DMX-1024 (wireless), enabling communication between one or more products simultaneously via the DMX transmitter (not included). There are two options to choose from: Professional XLR DMX and Home WIFI DMX. (Remote control included).

Ambients

