

The factory dining table 250x120

by Ramón Esteve

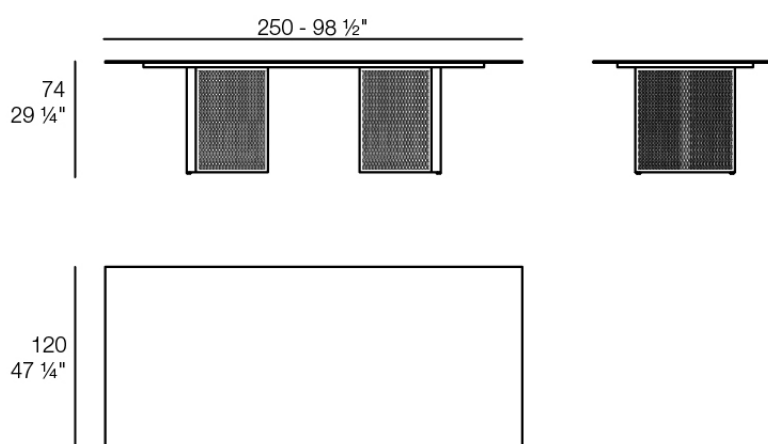
Vondom's The Factory collection, designed by Ramón Esteve, is inspired by the cast-iron architecture of New York. This collection combines an industrial aesthetic with modern comfort, offering a selection of furniture that brings character and sophistication to any outdoor space.



Info

Description

Weight: 68 Kg



THE FACTORY Mesa Comedor 250x120
THE FACTORY Dining Table 98 1/2"x 47 1/4"

Finishes

finishes

ALUMINIUM

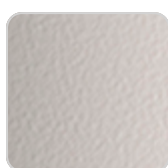
Ref. 54627



white



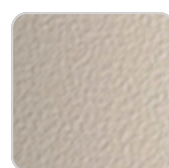
smoked



ecru



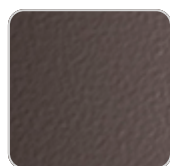
tortora



cream



garnet



brown



green



blue



gray



anthracite



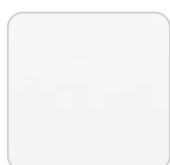
black

Lacquered aluminium profile.

tabletops

HPL

Ref. VVAR03691



VONDOM

white(black edge)

ecru(black edge)

black(black edge)

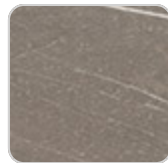
HPL black edge

Solid Core

Ref. VVAR03691B



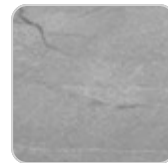
ecru stone



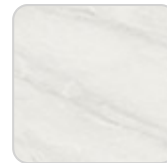
tortora stone



black stone



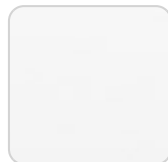
gray stone



white stone



smoked



white (white edge)



ecru



tortora



cream



garnet



brown



green



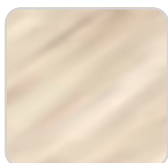
blue



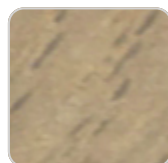
anthracite

Solid Core wood

Ref. VVAR03691B



oak1



oak2

