

The factory table sun lounger

by Ramón Esteve

Vondom's The Factory collection, designed by Ramón Esteve, is inspired by the cast-iron architecture of New York. This collection combines an industrial aesthetic with modern comfort, offering a selection of furniture that brings character and sophistication to any outdoor space.

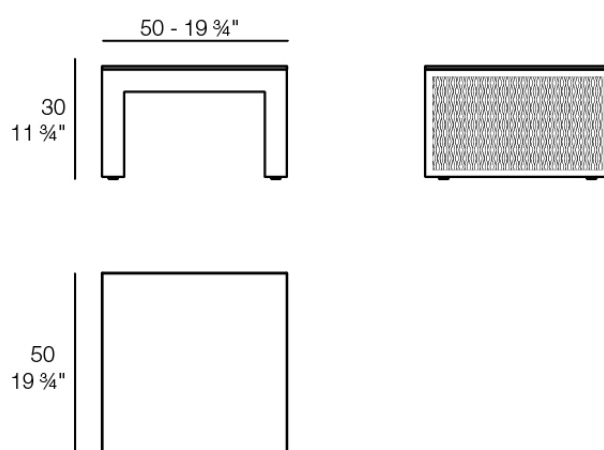


Info

Description

Composing of an aluminum profile and deployed mesh, all materials and components are resistant to extreme weather conditions. Available in different finishes.

Weight: 5.74 Kg



THE FACTORY Mesa Tumbona
THE FACTORY Table Sun Lounger

Finishes

finishes

ALUMINIUM

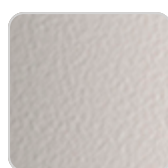
Ref. 54623



white



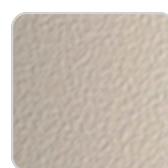
smoked



ecru



tortora



cream



garnet



brown



green



blue



gray



anthracite



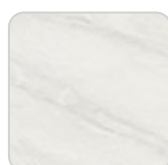
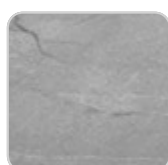
black

Lacquered aluminium profile.

tabletops

Solid Core

Ref. 54623TBL



VONDOM

gray stone



black stone

white stone



white (white edge)

smoked



ecru

ecru stone



tortora

tortora stone



cream



garnet



brown



green



blue



anthracite

Ambients



