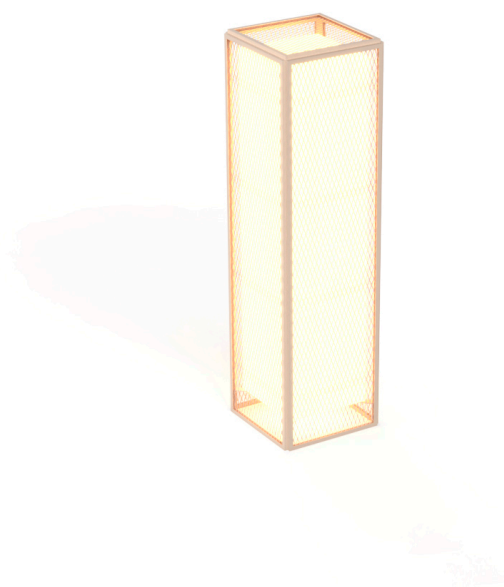


The factory lamp I

by Ramón Esteve

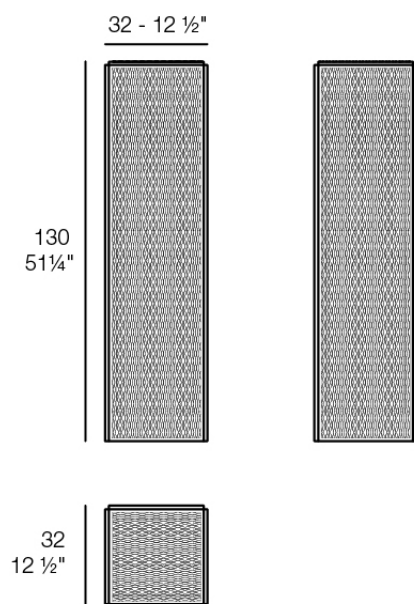
Vondom's The Factory collection, designed by Ramón Esteve, is inspired by the cast-iron architecture of New York. This collection combines an industrial aesthetic with modern comfort, offering a selection of furniture that brings character and sophistication to any outdoor space.



Info

Description

Weight: 11.69 Kg



THE FACTORY Lámpara 31x31x120
THE FACTORY Puff S 12¼ x 12¼ x 51¼"

Finishes

finishes

ALUMINIUM

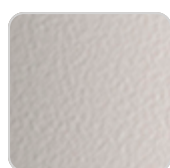
Ref. 54621



white



smoked



ecru



tortora



cream



garnet



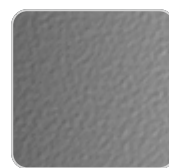
brown



green



blue



gray



anthracite



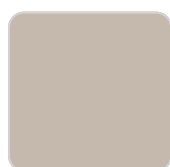
black

Lacquered aluminium profile.

lighting

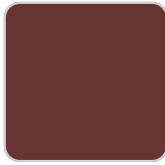
WHITE LED

Ref. 54621W



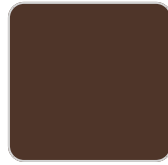
VONDOM

white



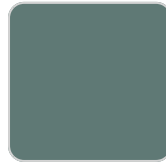
garnet

smoked



brown

ecru



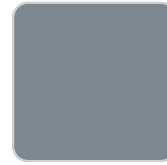
green

tortora



blue

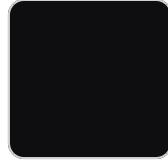
cream



gray



anthracite



black

White internally lit unit with LED technology. Available only in matte ice white finish.

RGBW LED Ref. 54621L



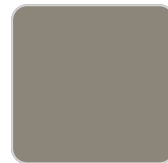
white



smoked



ecru



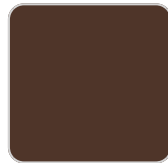
tortora



cream



garnet



brown



green



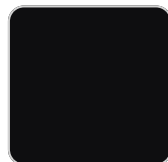
blue



gray



anthracite



black

Unit with internal lighting with RGBW LED technology and remote control unit for switching colors. Available only in matte ice white finish. Remote control included.

RGBW LED DMX

VONDOM

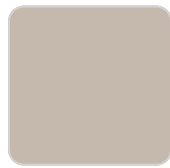
Ref. 54621D



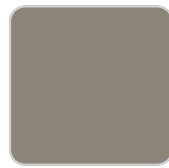
white



smoked



ecru



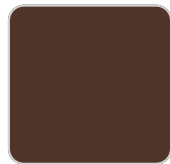
tortora



cream



garnet



brown



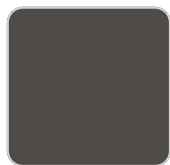
green



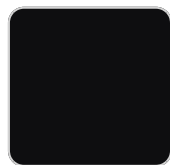
blue



gray



anthracite



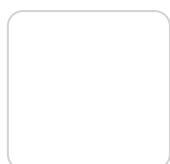
black

Unit with internal lighting with RGBW LED technology and remote control unit for switching colors. Also controlled by DMX-1024 (wireless), enabling communication between one or more products simultaneously via the DMX transmitter (not included). There are two options to choose from: Professional XLR DMX and Home WIFI DMX. (Remote control included).

Optional battery

RGBW LED BATTERY

Ref. 54621Y



white



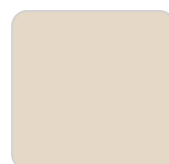
smoked



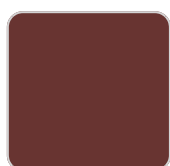
ecru



tortora



cream



garnet



brown



green



blue



gray

VONDON



anthracite

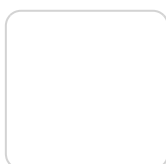


black

Unit with internal lighting with battery-powered RGBW LED technology. Includes charger and remote control for switching colors and charger. Available only in matte ice white finish.

RGBW LED DMX BATTERY

Ref. 54621DY



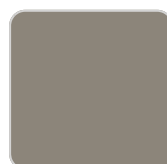
white



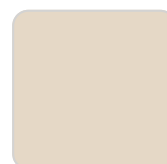
smoked



ecru



tortora



cream



garnet



brown



green



blue



gray



anthracite



black

Unit with internal lighting with RGBW LED technology and remote control unit for switching colors. Also controlled by DMX-1024 (wireless), enabling communication between one or more products simultaneously via the DMX transmitter (not included). There are two options to choose from: Professional XLR DMX and Home WIFI DMX. (Remote control included).

Ambients

