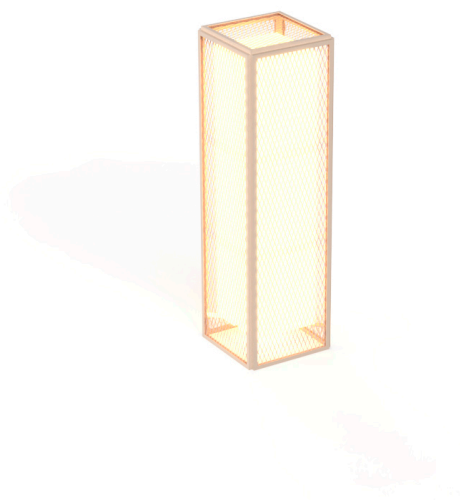


## The factory lamp m

by Ramón Esteve

Vondom's The Factory collection, designed by Ramón Esteve, is inspired by the cast-iron architecture of New York. This collection combines an industrial aesthetic with modern comfort, offering a selection of furniture that brings character and sophistication to any outdoor space.



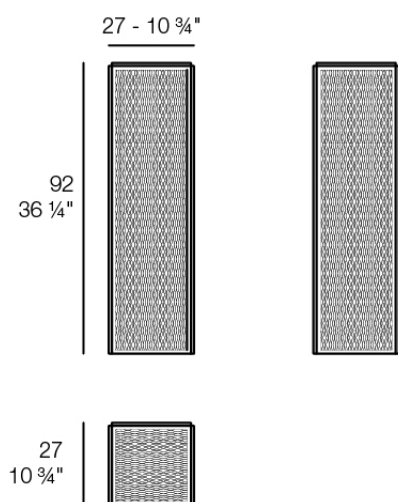
## Info

---

### Description

Designer lamp. The deployed mesh is made from aluminum, and the inner lighting is made out of polyethylene resin manufactured by rotational molding. Suitable for an interior and an outdoor use. Available in various finishes.

Weight: 7.29 Kg



THE FACTORY Lámpara 27 x 27 x 92  
THE FACTORY Puff S 10<sup>3</sup>/<sub>4</sub> x 10<sup>3</sup>/<sub>4</sub> x 36<sup>1</sup>/<sub>4</sub>"

## Finishes

---

### lighting

---

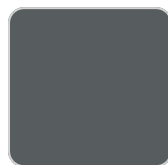
WHITE LED  
Ref. 54615W



white



british gray



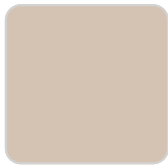
traffic gray



black



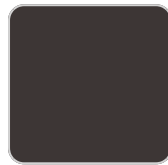
ecru



crema



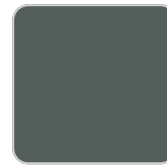
castoro fiber



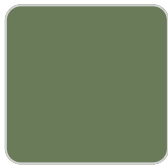
cacao



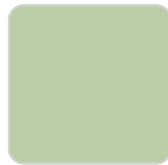
notte blue



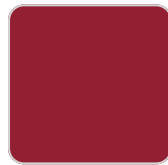
modo green



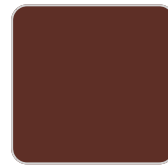
pickle



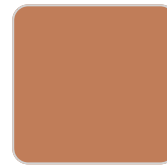
almond



red



purjai red



melon



mostaza

White internally lit unit with LED technology. Available only in matte ice white finish.

RGBW LED  
Ref. 54615L

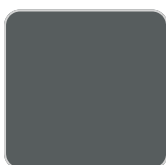
# VONDOM



white



british gray



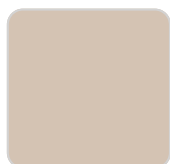
traffic gray



black



ecru



crema



castoro fiber



cacao



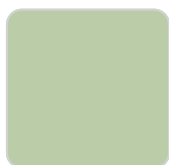
notte blue



modo green



pickle



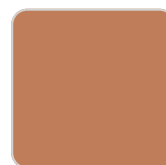
almond



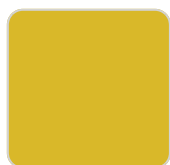
red



purjai red



melon



mostaza

Unit with internal lighting with RGBW LED technology and remote control unit for switching colors. Available only in matte ice white finish. Remote control included.

## RGBW LED DMX

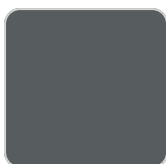
Ref. 54615D



white



british gray



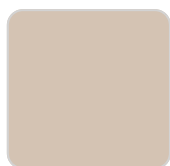
traffic gray



black



ecru



crema



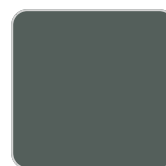
castoro fiber



cacao

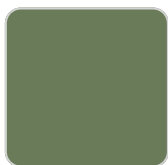


notte blue

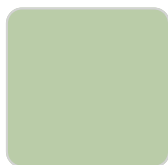


modo green

# VONDOM



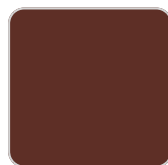
pickle



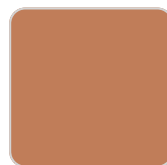
almond



red



purjai red



melon



mostaza

Unit with internal lighting with RGBW LED technology and remote control unit for switching colors. Also controlled by DMX-1024 (wireless), enabling communication between one or more products simultaneously via the DMX transmitter (not included). There are two options to choose from: Professional XLR DMX and Home WIFI DMX. (Remote control included).

Optional battery

## RGBW LED BATTERY

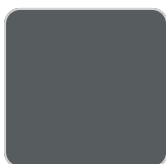
Ref. 54615Y



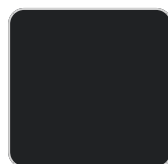
white



british gray



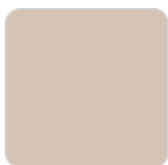
traffic gray



black



ecru



crema



castoro fiber



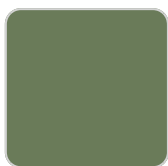
cacao



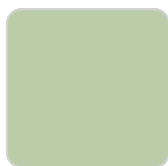
notte blue



modo green



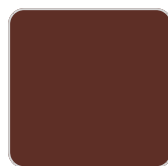
pickle



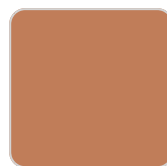
almond



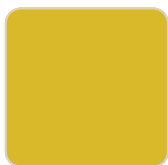
red



purjai red



melon

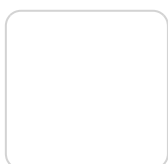


mostaza

Unit with internal lighting with battery-powered RGBW LED technology. Includes charger and remote control for switching colors and charger. Available only in matte ice white finish.

## RGBW LED DMX BATTERY

Ref. 54615DY



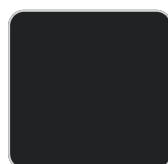
white



british gray



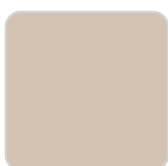
traffic gray



black



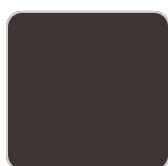
ecru



crema



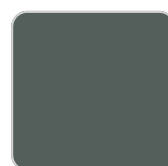
castoro fiber



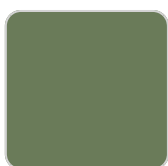
cacao



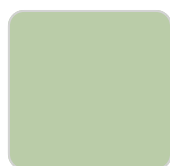
notte blue



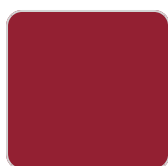
modo green



pickle



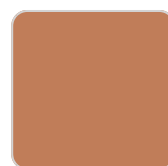
almond



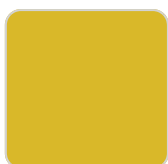
red



purjai red



melon



mostaza

Unit with internal lighting with RGBW LED technology and remote control unit for switching colors. Also controlled by DMX-1024 (wireless), enabling communication between one or more products simultaneously via the DMX transmitter (not included). There are two options to choose from: Professional XLR DMX and Home WIFI DMX. (Remote control included).

## Ambients

---

