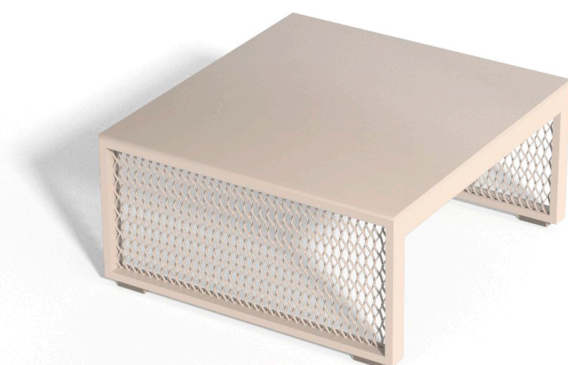


The factory coffee table 100x100x40

by Ramón Esteve

Vondom's The Factory collection, designed by Ramón Esteve, is inspired by the cast-iron architecture of New York. This collection combines an industrial aesthetic with modern comfort, offering a selection of furniture that brings character and sophistication to any outdoor space.

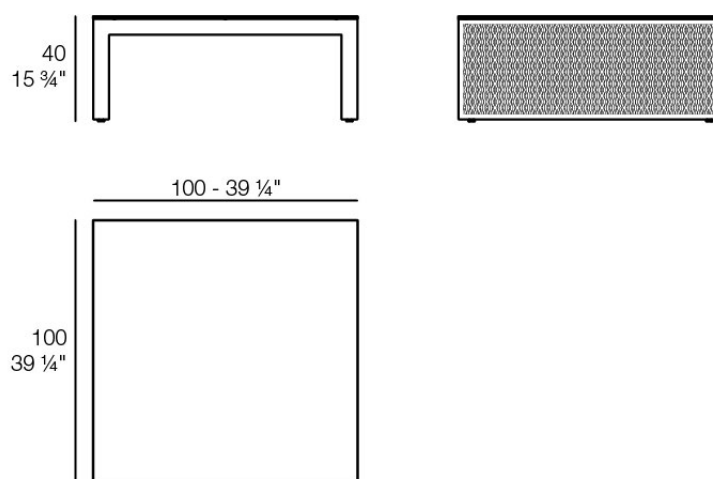


Info

Description

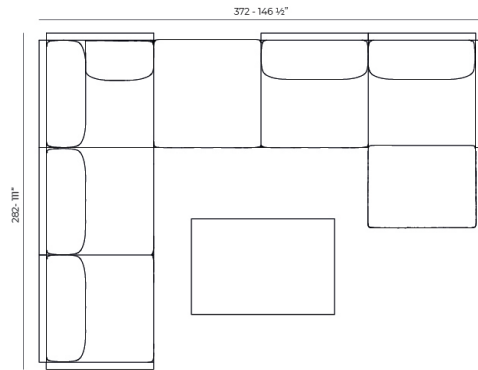
Composing of an aluminum profile and deployed mesh, all materials and components are resistant to extreme weather conditions. Available in different finishes.

Weight: 8.76 Kg

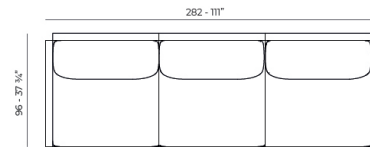


THE FACTORY Mesa Baja 100x100
THE FACTORY Low Table 39 1/4"x 39 1/4"

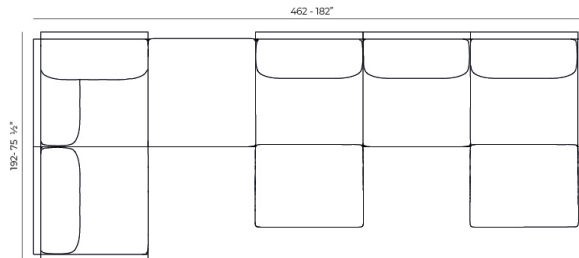
Combinations



- 1 x 54601 Sofá Brazo Derecho - Sectional Sofa Right
- 1 x 54608 Sofá Chaiselongue Izquierdo - Sectional Chaiselongue Left
- 2 x 54605 Sofá Módulo Central - Sectional Armless
- 1 x 54606 Sofá Puff M - Sectional Puff M
- 1 x 54603 Sofá Esquina Derecha - Sectional Right Corner



- 1 x 54601 Sofá Brazo Derecho - Sectional Sofa Right
- 1 x 54602 Sofá Brazo Izquierdo - Sectional Sofa Left
- 1 x 54605 Sofá Módulo Central - Sectional Armless



- 1 x 54601 Sofá Brazo Derecho - Sectional Sofa Right
- 1 x 54608 Sofá Chaiselongue Izquierdo - Sectional Chaiselongue Left
- 1 x 54605 Sofá Módulo Central - Sectional Armless
- 1 x 54606 Sofá Puff M - Sectional Puff M
- 1 x 54604 Sofá Esquina Izquierda - Sectional Left Corner
- 1 x 54609 Sofá Chaiselongue Central - Sectional Armless Chaiselongue

Finishes

finishes

ALUMINIUM

Ref. 54614



white



british gray



traffic gray



black



ecru



crema



castoro fiber



cacao



notte blue



modo green



pickle



almond



red



purjai red



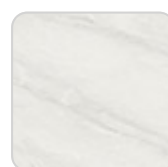
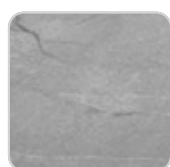
melon

Lacquered aluminium profile.

tabletops

Solid Core

Ref. 54614TBL



VONDOM

kandia black



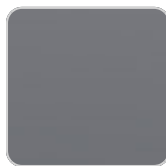
british gray

yule gray



cacao

castoro fiber



traffic gray

gioia bianco



modo green

piombo gray



crema



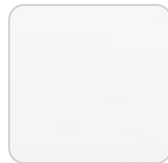
purjai red



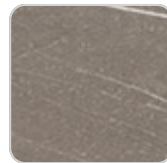
notte blue



yule brown



white (white edge)



pulpis gray

Ambients

