

Vineyard dining table wheel

by Ramón Esteve

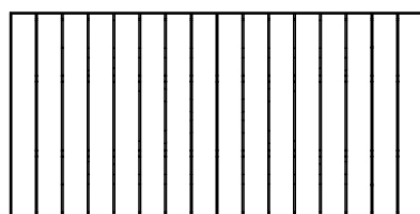
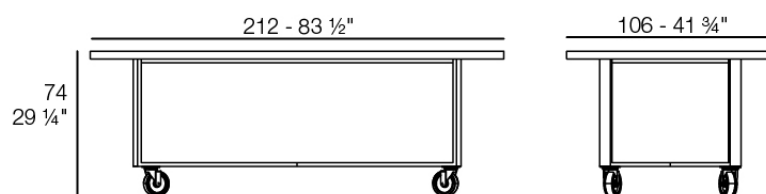
The Vineyard collection, designed by Ramón Esteve, captures the essence of Mediterranean style, combining elegance and comfort in each of its pieces. Inspired by vineyards and outdoor living, this collection is perfect for creating relaxed and welcoming environments.



Info

Description

Weight: 32 Kg



VINEYARD Mesa Comedor
VINEYARD Dining Table

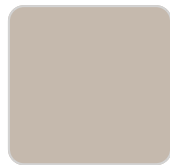
Finishes

finishes

ALUMINIUM
Ref. 54505ZSU



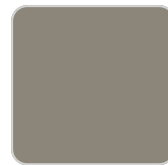
white



ecru



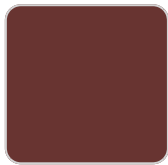
smoked



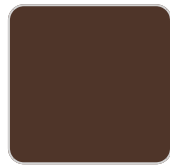
tortora



cream



garnet



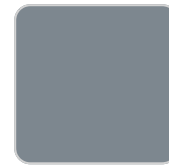
brown



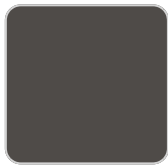
green



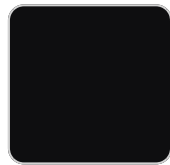
blue



gray



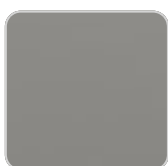
anthracite



black

panel/top

Solid Core
Ref. 54505AA



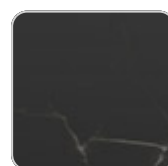
smoked



ecru stone



tortora stone



black stone

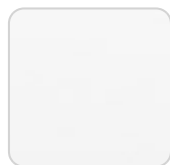


gray stone

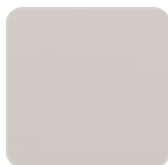
VONDOM



white stone



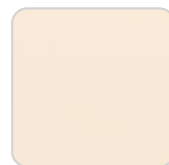
white (white edge)



ecru



tortora



cream



garnet



brown



green



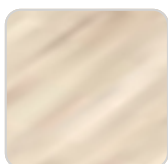
blue



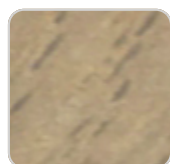
anthracite

Solid Core wood

Ref. 54505AA



oak1



oak2

Teak

Ref. 54505AA



natural teak



weathered teak

Ambients

