

## Vineyard dining table wheel

by Ramón Esteve

The Vineyard collection, designed by Ramón Esteve, captures the essence of Mediterranean style, combining elegance and comfort in each of its pieces. Inspired by vineyards and outdoor living, this collection is perfect for creating relaxed and welcoming environments.

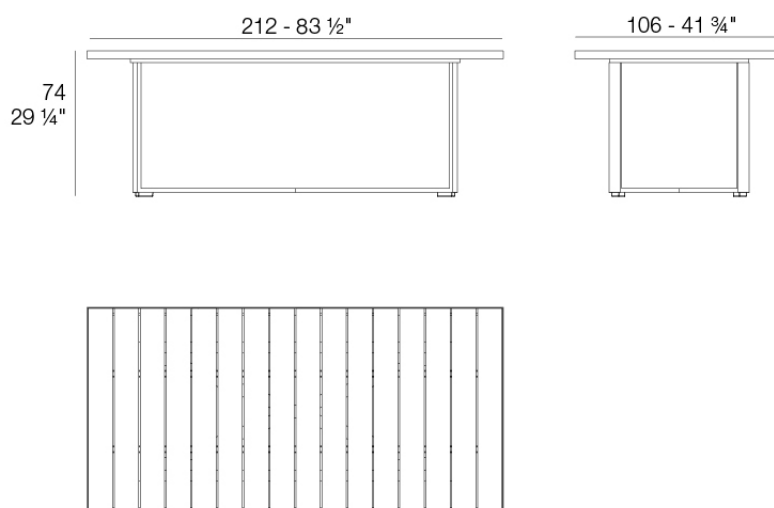


## Info

---

### Description

Weight: 32 Kg



Versión con patas  
Leg version

## Finishes

---

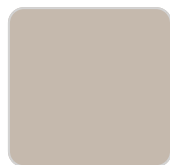
### finishes

---

ALUMINIUM  
Ref. 54505ZSU



white



ecru



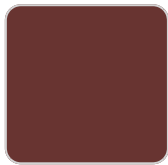
smoked



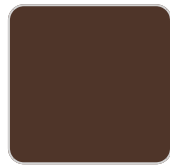
tortora



cream



garnet



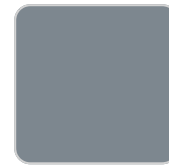
brown



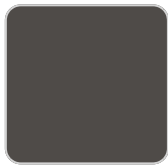
green



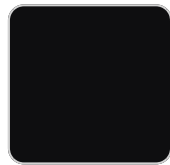
blue



gray



anthracite



black

### panel/top

---

Solid Core  
Ref. 54505AA



ecru stone



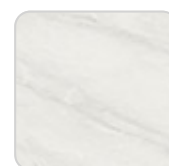
tortora stone



black stone



gray stone

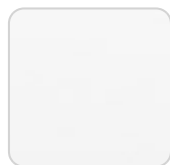


white stone

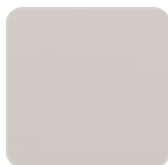
# VONDOM



smoked



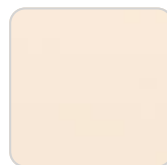
white (white edge)



ecru



tortora



cream



garnet



brown



green

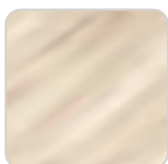


blue

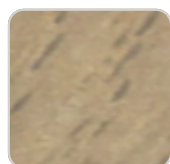


anthracite

## Solid Core wood Ref. 54505AA



oak1



oak2

## Teak Ref. 54505AA



natural teak



weathered teak

## Ambients

---

