

## Vineyard extra-large coffee table legs

by Ramón Esteve

The Vineyard collection, designed by Ramón Esteve, captures the essence of Mediterranean style, combining elegance and comfort in each of its pieces. Inspired by vineyards and outdoor living, this collection is perfect for creating relaxed and welcoming environments.

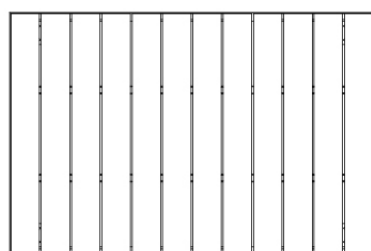
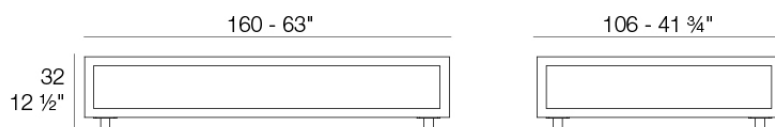


## Info

---

### Description

Weight: 60 Kg



Versión con patas  
Leg version

## Finishes

---

### finishes

---

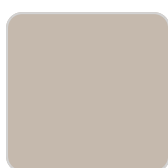
ALUMINIUM  
Ref. 54504ZSU



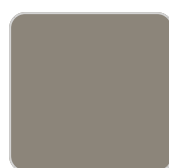
white



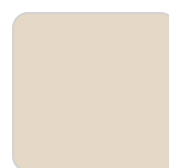
smoked



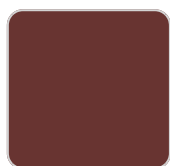
ecru



tortora



cream



garnet



brown



green



blue



gray



anthracite



black

### panel/top

---

Teak  
Ref. 54504AA



natural teak



weathered teak

## Ambients

---

