

Vineyard extra-large coffee table legs

by Ramón Esteve

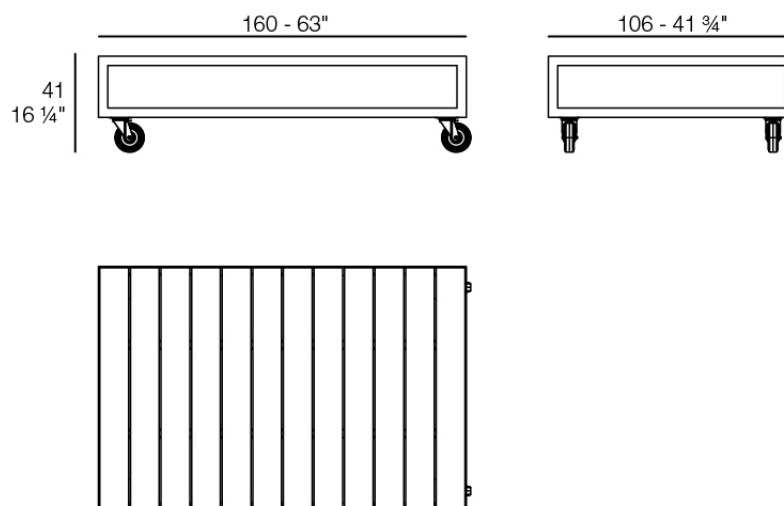
The Vineyard collection, designed by Ramón Esteve, captures the essence of Mediterranean style, combining elegance and comfort in each of its pieces. Inspired by vineyards and outdoor living, this collection is perfect for creating relaxed and welcoming environments.



Info

Description

Weight: 60 Kg



VINEYARD Mesa XL
VINEYARD Table XL

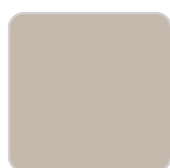
Finishes

finishes

ALUMINIUM
Ref. 54504ZSU



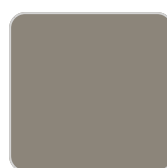
white



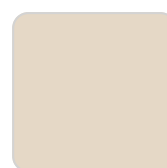
ecru



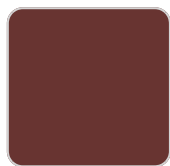
smoked



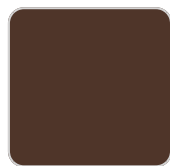
tortora



cream



garnet



brown



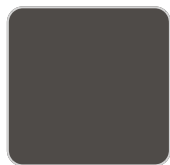
green



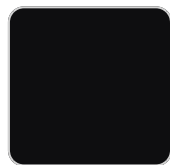
blue



gray



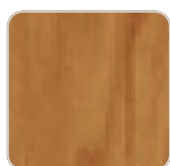
anthracite



black

panel/top

Teak
Ref. 54504AA



natural teak



weathered teak

Ambients

