

Vineyard large coffee table legs

by Ramón Esteve

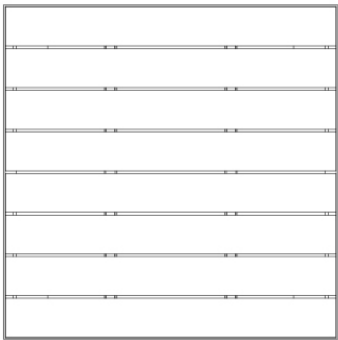
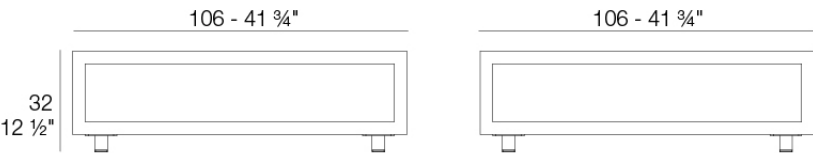
The Vineyard collection, designed by Ramón Esteve, captures the essence of Mediterranean style, combining elegance and comfort in each of its pieces. Inspired by vineyards and outdoor living, this collection is perfect for creating relaxed and welcoming environments.



Info

Description

Weight: 43 Kg



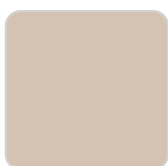
Versión con patas
Leg version

Finishes

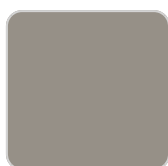
finishes

ALUMINIUM

Ref. 54503ZSU



crema



castoro fiber

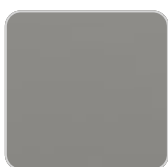


cacao

panel/top

Solid Core

Ref. 54503AA



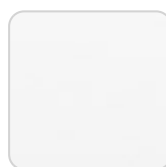
british gray



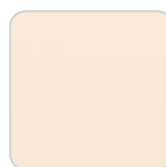
notte blue



traffic gray



white (white edge)



crema



castoro fiber



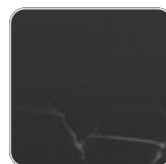
yule brown



piombo gray



pulpis gray



kandia black



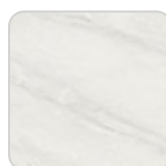
cacao



yule gray



modo green



gioia bianco



purjai red

Solid Core wood
Ref. 54503AA



oak1



oak2

Teak
Ref. 54503AA



natural teak



weathered teak

Ambients

