

Faz pot 97x93x75

by Ramón Esteve

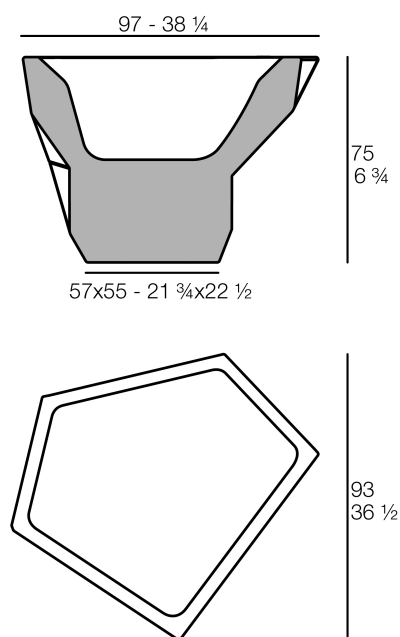
Vondom's Faz collection, designed by Ramón Esteve, is one of the firm's most iconic collections. It stands out for its modular design and sophistication, representing harmony, serenity and timelessness through mineral and emphatic shapes. Faz transforms environments with its unique combination of material and light, creating an enveloping and exclusive atmosphere.



Info

Description

Weight: 20 Kg



FAZ Jarron Medio C = 97L
FAZ Medium Planter C = 25 3/4 gal

Finishes

finishes

BASIC

Ref. 54401A



notte blue



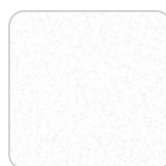
crema



purjai red



orange



ice



green



white



black



bronze



steel



anthracite



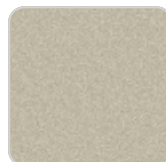
red



khaki



taupe



ecru



beige

Matt Polyethylene

LACQUERED

Ref. 54401RF



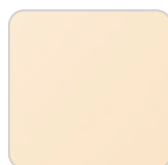
kaki 3109



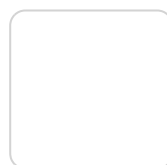
notte blue



bronze 3108



crema



beige 3107



taupe 3104



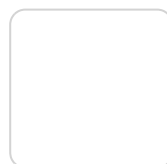
modo green



anthracite 3106



ecru 3103



acero 3105



black 3102



champagne



white 3101



red 3114



purjai red



orange

Lacquered Polyethylene

lighting

WHITE LED
Ref. 54401W



ice

White internally lit unit with LED technology. Available only in matte ice white finish.

RGBW LED Ref. 54401L



ice

Unit with internal lighting with RGBW LED technology and remote control unit for switching colors. Available only in matte ice white finish. Remote control included.

RGBW LED BATTERY Ref. 54401Y



ice

Unit with internal lighting with battery-powered RGBW LED technology. Includes charger and remote control for switching colors and charger. Available only in matte ice white finish.

RGBW LED DMX BATTERY Ref. 54401DY



ice

Unit with internal lighting with RGBW LED technology and remote control unit for switching colors. Also controlled by DMX-1024 (wireless), enabling communication between one or more products simultaneously via the DMX transmitter (not included). There are two options to choose from: Professional XLR DMX and Home WIFI DMX. (Remote control included).

Ambients

