

## Faz wood high table ø60x105

by Ramón Esteve

Vondom's Faz collection, designed by Ramón Esteve, is one of the firm's most iconic collections. It stands out for its modular design and sophistication, representing harmony, serenity and timelessness through mineral and emphatic shapes. Faz transforms environments with its unique combination of material and light, creating an enveloping and exclusive atmosphere.

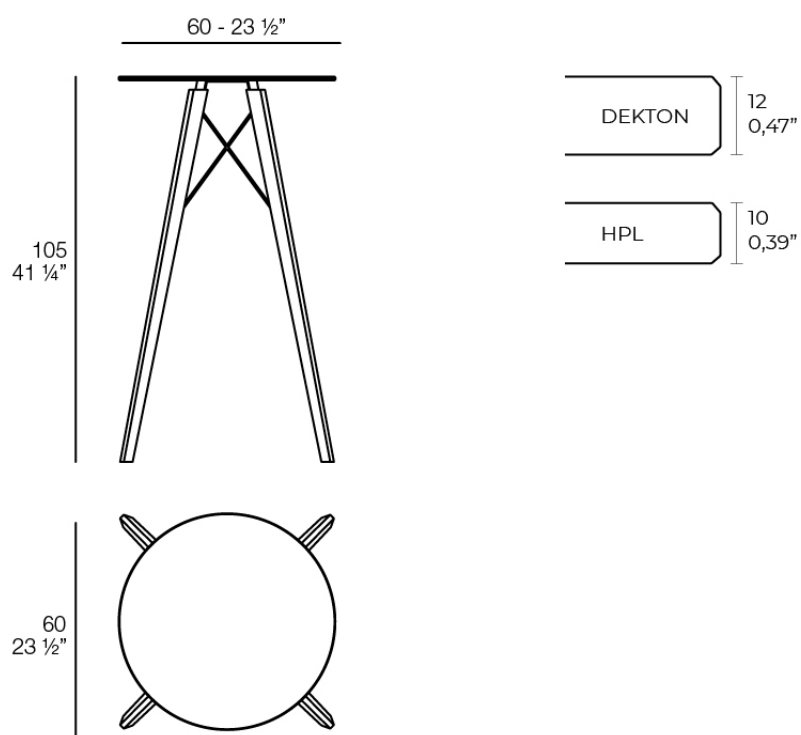


## Info

---

### Description

Weight: 10.17 Kg



FAZ WOOD Mesa Alta Ø60  
FAZ WOOD Dinning table Ø23 1/2"

## Finishes

---

### tabletops

---

HPL

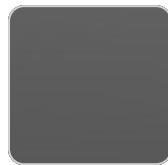
Ref. 54318



white(black edge)



ecru(black edge)



black(black edge)

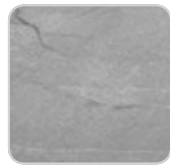
HPL black edge

Solid Core

Ref. 54318B



black stone



gray stone



white stone



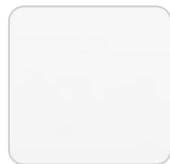
smoked



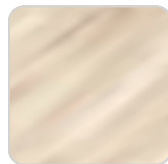
ecru stone



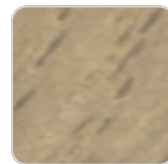
tortora stone



white (white edge)



oak1



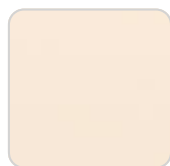
oak2



ecru



tortora



cream



garnet



brown



green

# VONDOM



blue



anthracite

HPL solid core

## estructura

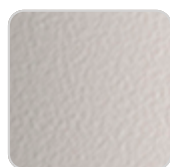
---

ALUMINIUM

Ref. VVAR03098



white



ecru



black

## legs

---

Ash

Ref. VVAR03082



wood 1



wood 2

## Ambients

---

