

## Faz wood high table 60x60x105

by Ramón Esteve

Vondom's Faz collection, designed by Ramón Esteve, is one of the firm's most iconic collections. It stands out for its modular design and sophistication, representing harmony, serenity and timelessness through mineral and emphatic shapes. Faz transforms environments with its unique combination of material and light, creating an enveloping and exclusive atmosphere.

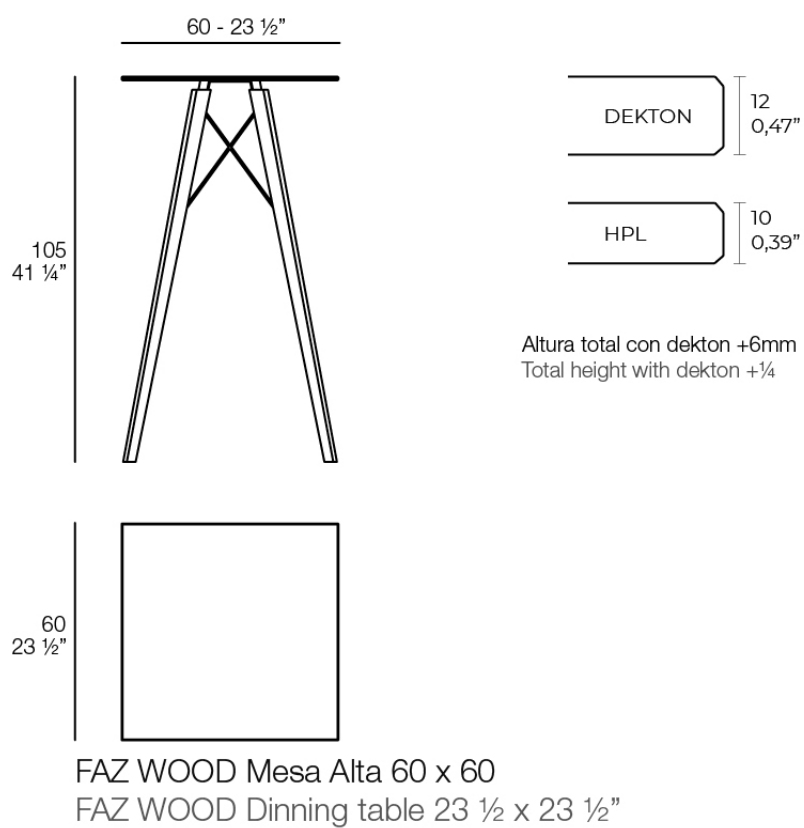


## Info

---

### Description

Weight: 11.19 Kg



## Finishes

---

### tabletops

---

HPL

Ref. 54317



white(black edge)



ecru(black edge)

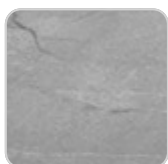


black(black edge)

HPL black edge

Solid Core

Ref. 54317B



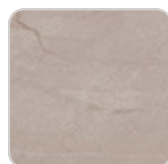
gray stone



white stone



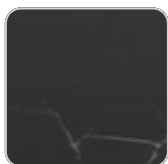
smoked



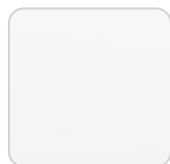
ecru stone



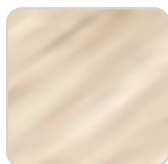
tortora stone



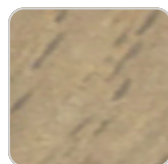
black stone



white (white edge)



oak1



oak2



ecru



tortora



cream



garnet



brown



green



blue



anthracite

HPL solid core

## estructura

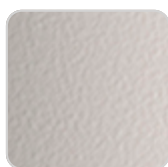
---

ALUMINIUM

Ref. VVAR03098



white



ecru



black

## legs

---

Ash

Ref. VVAR03082



wood 1



wood 2



## Ambients

---

