

Faz wood high table 50x50x105

by Ramón Esteve

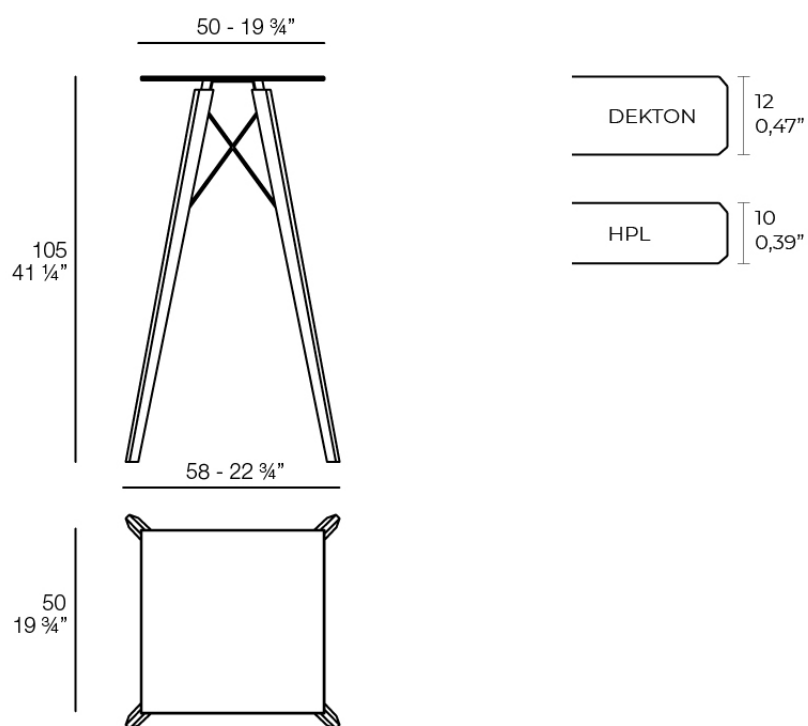
Vondom's Faz collection, designed by Ramón Esteve, is one of the firm's most iconic collections. It stands out for its modular design and sophistication, representing harmony, serenity and timelessness through mineral and emphatic shapes. Faz transforms environments with its unique combination of material and light, creating an enveloping and exclusive atmosphere.



Info

Description

Weight: 9.74 Kg



FAZ WOOD Mesa Alta 50 x 50
FAZ WOOD Dining table 19 3/4 x 19 3/4"

Finishes

tabletops

HPL

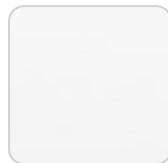
Ref. 54315



black(black edge)



ecru(black edge)



white(black edge)

HPL black edge

Solid Core

Ref. 54315B



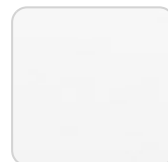
british gray



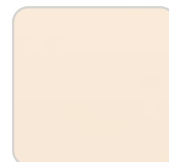
notte blue



traffic gray



white (white edge)



crema



castoro fiber



yule brown



piombo gray



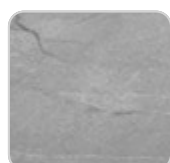
pulpis gray



kandia black



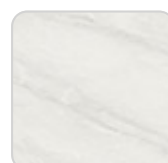
cacao



yule gray



modo green

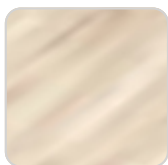


gioia bianco



purjai red

VONDOM



oak1



oak2

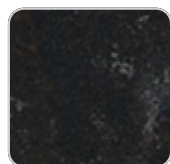
HPL solid core

Dekton

Ref. 54315M



danae



kelya



entzo

CERAMIC SURFACE

estructura

ALUMINIUM

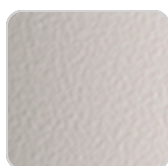
Ref. VVAR03098



white



black



ecru

Ambients

