

Faz wood dining table ø80x74

by Ramón Esteve

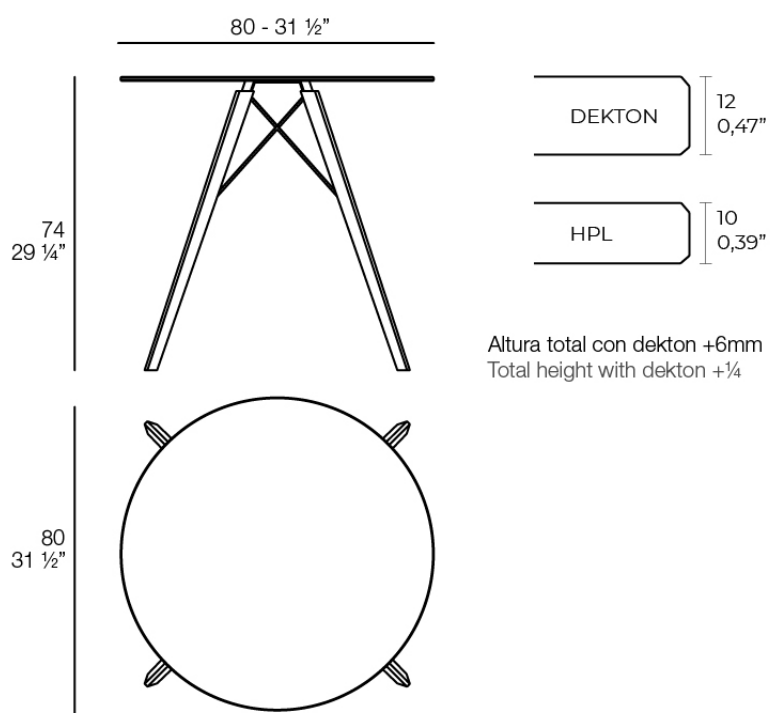
Vondom's Faz collection, designed by Ramón Esteve, is one of the firm's most iconic collections. It stands out for its modular design and sophistication, representing harmony, serenity and timelessness through mineral and emphatic shapes. Faz transforms environments with its unique combination of material and light, creating an enveloping and exclusive atmosphere.



Info

Description

Weight: 12.26 Kg



FAZ WOOD Mesa Comedor Ø80
FAZ WOOD Dinning table Ø31 1/2"

Finishes

tabletops

HPL

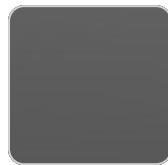
Ref. 54314



white(black edge)



ecru(black edge)



black(black edge)

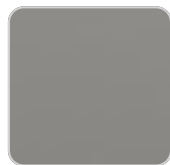
HPL black edge

Solid Core

Ref. 54314B



white stone



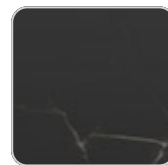
smoked



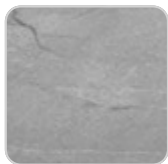
ecru stone



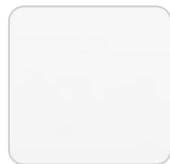
tortora stone



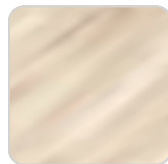
black stone



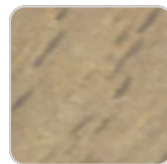
gray stone



white (white edge)



oak1



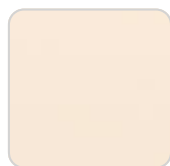
oak2



ecru



tortora



cream



garnet



brown



green

VONDOM



blue



anthracite

HPL solid core

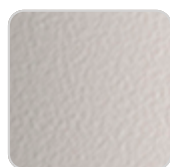
estructura

ALUMINIUM

Ref. VVAR03083



white



ecru



black

legs

Ash

Ref. VVAR03081



wood 1



wood 2

Ambients

