

Faz wood dining table ø60x74

by Ramón Esteve

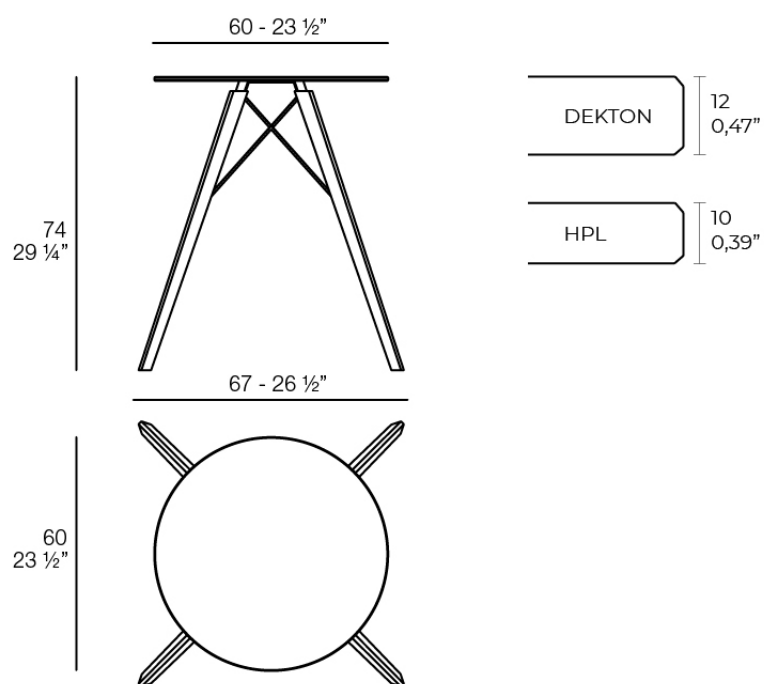
Vondom's Faz collection, designed by Ramón Esteve, is one of the firm's most iconic collections. It stands out for its modular design and sophistication, representing harmony, serenity and timelessness through mineral and emphatic shapes. Faz transforms environments with its unique combination of material and light, creating an enveloping and exclusive atmosphere.



Info

Description

Weight: 9.05 Kg



FAZ WOOD Mesa Comedor Ø60
FAZ WOOD Dinning table Ø23 1/2"

Finishes

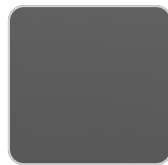
tabletops

HPL

Ref. 54310



white(black edge)



black(black edge)

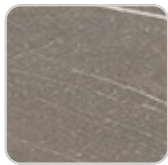


ecru(black edge)

HPL black edge

Solid Core

Ref. 54310B



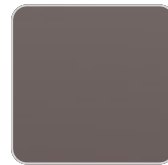
pulpis gray



piombo gray



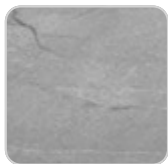
kandia black



cacao



modo green



yule gray



purjai red



gioia bianco



notte blue



british gray



white (white edge)



traffic gray



crema

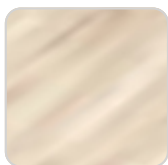


yule brown



castoro fiber

VONDOM



oak1



oak2

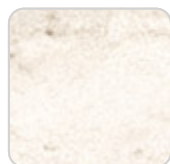
HPL solid core

Dekton

Ref. 54310M



entzo



danae



kelya

CERAMIC SURFACE

estructura

ALUMINIUM

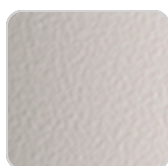
Ref. VVAR03083



white



black



ecru

Ambients

