

Faz wood lounge table 200x100x74

by Ramón Esteve

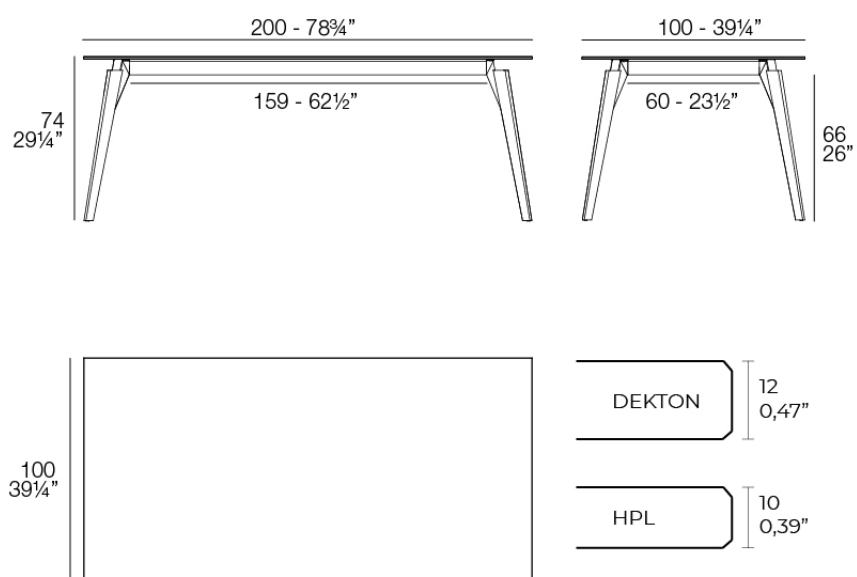
Vondom's Faz collection, designed by Ramón Esteve, is one of the firm's most iconic collections. It stands out for its modular design and sophistication, representing harmony, serenity and timelessness through mineral and emphatic shapes. Faz transforms environments with its unique combination of material and light, creating an enveloping and exclusive atmosphere.



Info

Description

Weight: 45.86 Kg



FAZ WOOD Mesa Salón 200 x 100
FAZ WOOD Lounge Table 78 $\frac{3}{4}$ " x 39 $\frac{1}{4}$ "

Finishes

tabletops

HPL

Ref. 54308



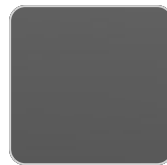
white(black edge)



ecru(black edge)



gray

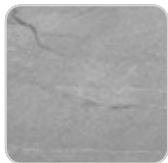


black(black edge)

HPL black edge

Solid Core

Ref. 54308B



gray stone



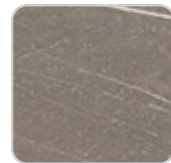
white stone



smoked



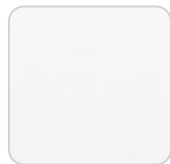
ecru stone



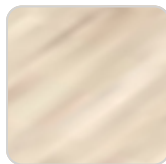
tortora stone



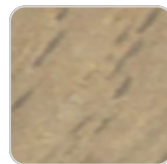
black stone



white (white edge)



oak1



oak2



ecru



tortora



cream



garnet



brown



green

VONDOM



blue



anthracite

HPL solid core

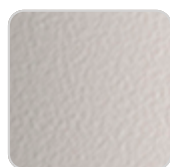
estructura

ALUMINIUM

Ref. VVAR03084



white



ecru



black

legs

Ash

Ref. VVAR03080



wood 1



wood 2

Ambients

