

Faz wood lounge table 100x100x74

by Ramón Esteve

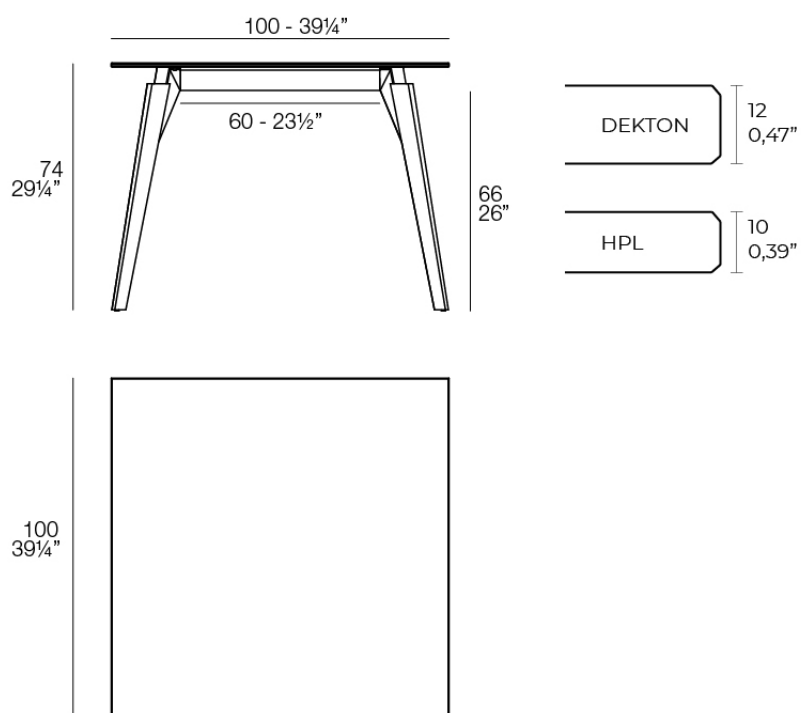
Vondom's Faz collection, designed by Ramón Esteve, is one of the firm's most iconic collections. It stands out for its modular design and sophistication, representing harmony, serenity and timelessness through mineral and emphatic shapes. Faz transforms environments with its unique combination of material and light, creating an enveloping and exclusive atmosphere.



Info

Description

Weight: 28.51 Kg



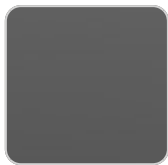
FAZ WOOD Mesa Sal3n 100 x 100
FAZ WOOD Lounge Table 39 1/4" x 39 1/4"

Finishes

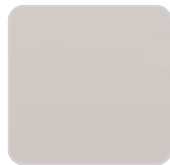
tabletops

HPL

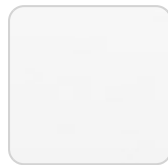
Ref. 54306



black(black edge)



ecru(black edge)



white(black edge)

HPL black edge

Solid Core

Ref. 54306B



white (white edge)



traffic gray



crema



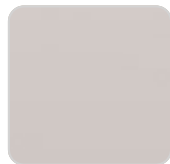
yule brown



castoro fiber



pulpis gray



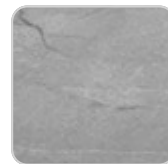
piombo gray



kandia black



cacao



yule gray



modo green



purjai red



gioia bianco

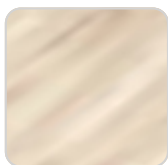


notte blue



british gray

VONDOM



oak1



oak2

HPL solid core

Dekton

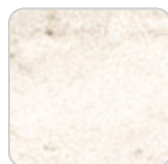
Ref. 54306M



kelya



entzo



danae

CERAMIC SURFACE

estructura

ALUMINIUM

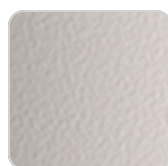
Ref. VVAR03084



white



black



ecru

Ambients

