

Gatsby cylinder table lamp

by Ramón Esteve

The Gatsby collection, designed by Ramón Esteve, evokes the elegance and glamour of Art Deco, reminding us of the Roaring Twenties. Inspired by the bonanza, parties and excesses of that era, Gatsby combines intricate design with extraordinary simplicity, reflecting the American dream.

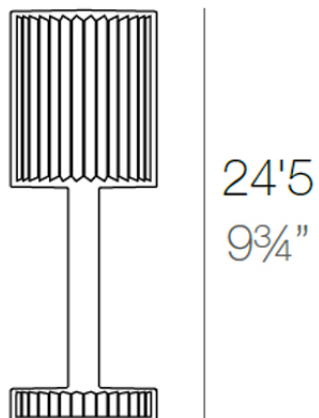


Info

Description

Polymethylmethacrylate resin. Transparent or colored

Weight: 0.56 Kg



GATSBY Lámpara Mesa Cilíndrica
GATSBY Cylindrical Table Lamp

Finishes

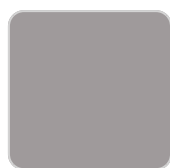
lighting

LIGHT BATTERY

Ref. 54253WY



glass



fume



ambar

White internally lit unit with LED technology, with battery-powered.
Single LED Warm White 2700k⁰

RGBW LED BATTERY

Ref. 54253Y



glass

Unit with internal lighting with battery-powered RGBW LED technology. Includes charger.

5 LEDs Colors. (Blue / Fucsia / Amber / Turquoise / Warm White 2700k⁰)

RGBW LED DMX BATTERY

Ref. 54252DY



glass

Unit with internal lighting with RGBW LED technology. Also control LED by DMX-1024 (wireless), enabling communication between one or more products simultaneously via the DMX transmitter (not included). There are two options to choose from: Professional XLR DMX and Home WIFI DMX. (Remote control included). Optional battery. 5 LEDs Colors. (Blue / Fucsia / Amber / Turquoise / Warm White 2700k^o)

Ambients

