

Frame aluminium table 250x100x74

by Ramón Esteve

Frame, outdoor collection by Ramon Esteve, comes from generating serene and timeless shapes using the framework as elementary geometry. The endless possibilities offered by the material using advanced technology, was the motivation to explore the limits.

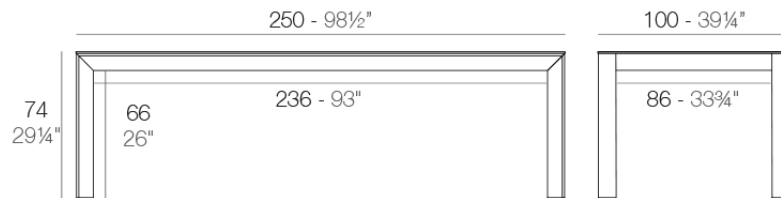


Info

Description

Extruded aluminum with cast lacquered aluminum base. HPL Table top ó Dekton Table top. Item suitable for indoor and outdoor use. HPL Table top.

Weight: 52.88 Kg



FRAME Mesa 250x100cm
FRAME Dinning Table 98 1/2"x39 1/4"

Finishes

finishes

ALUMINIUM
Ref. 54247FB



white



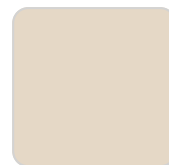
smoked



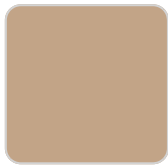
ecru



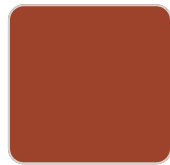
tortora



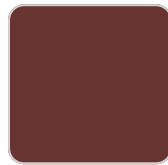
cream



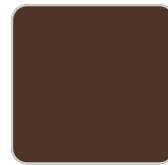
camel



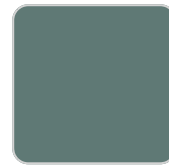
clay



garnet



brown



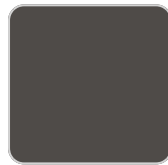
green



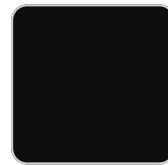
blue



gray



anthracite



black

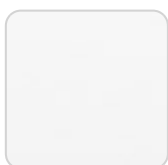


ocean

Lacquered aluminium profile.

tabletops

HPL
Ref. VVAR02793



VONDOM

white(black edge)

ecru(black edge)

black(black edge)

HPL black edge

Solid Core

Ref. VVAR02794



white stone



cream stone



green stone



ecru stone



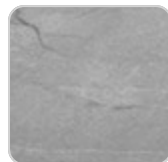
smoked



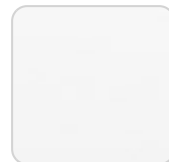
tortora stone



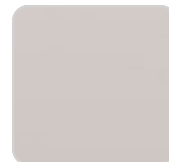
black stone



gray stone



white (white edge)



ecru



tortora



cream



camel



clay



garnet



brown



green



blue



gray



anthracite



ocean

Solid Core wood

Ref. VVAR02794

VONDOM



oak1



oak2

