

Frame aluminium table 100x100x32

by Ramón Esteve

Frame, outdoor collection by Ramon Esteve, comes from generating serene and timeless shapes using the framework as elementary geometry. The endless possibilities offered by the material using advanced technology, was the motivation to explore the limits.



Info

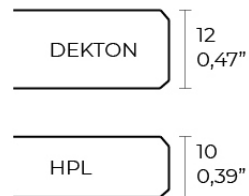
Description

Extruded aluminum with cast lacquered aluminum base. HPL Table top ó Dekton Table top. Item suitable for indoor and outdoor use. HPL Table top.

Weight: 20.95 Kg



FRAME Mesa Baja Aluminio 100 x 100 cm
FRAME Low Table Aluminium 39 1/4" x 39 1/4"



Finishes

finishes

ALUMINIUM
Ref. 54245FB



white



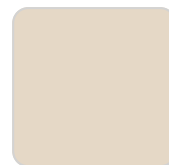
smoked



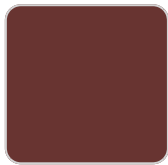
ecru



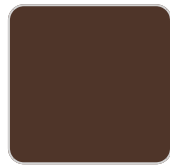
tortora



cream



garnet



brown



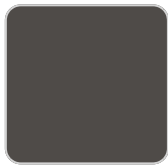
green



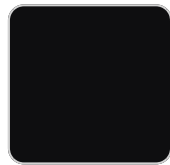
blue



gray



anthracite

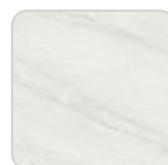


black

Lacquered aluminium profile.

tabletops

Solid Core
Ref. VVAR02564



VONDOM

black stone



ecru stone

tortora stone



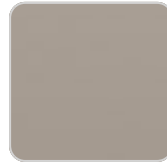
white (white edge)

gray stone



ecru

white stone



tortora

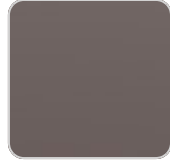
smoked



cream



garnet



brown



green



blue



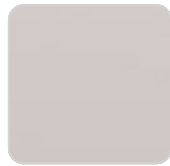
anthracite

HPL

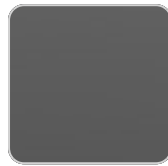
Ref. VVAR02563



white(black edge)



ecru(black edge)



black(black edge)

HPL black edge

Dekton

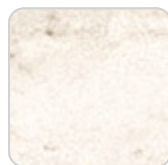
Ref. VVAR02831



kelya



entzo



danae

Ambients

