

## Frame aluminium table 200x60x105

by Ramón Esteve

Frame, outdoor collection by Ramon Esteve, comes from generating serene and timeless shapes using the framework as elementary geometry. The endless possibilities offered by the material using advanced technology, was the motivation to explore the limits.



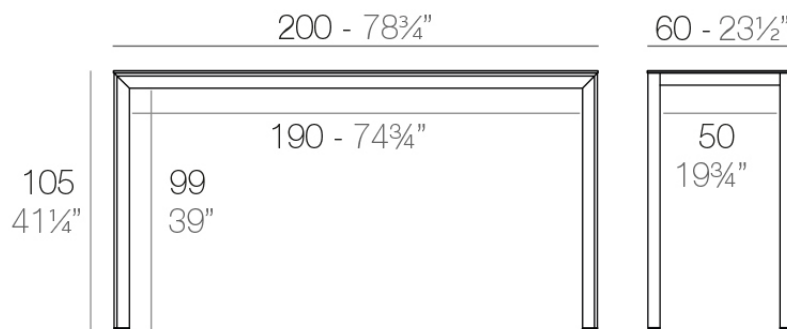
## Info

---

### Description

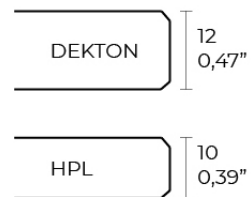
Extruded aluminum with cast lacquered aluminum base. HPL Table top ó Dekton Table top. Item suitable for indoor and outdoor use. HPL Table top.

Weight: 30.15 Kg



FRAME Mesa Alta Aluminio 200 x 60

FRAME Bar Table Aluminio 78¾" x 23½"



## Finishes

---

### finishes

---

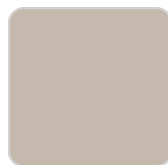
ALUMINIUM  
Ref. 54244FB



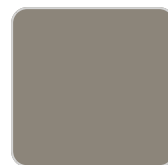
white



smoked



ecru



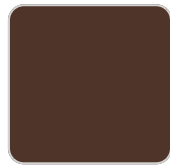
tortora



cream



garnet



brown



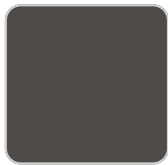
green



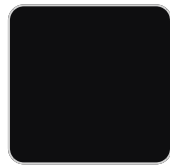
blue



gray



anthracite



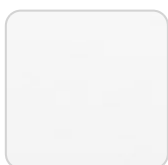
black

Lacquered aluminium profile.

### tabletops

---

HPL  
Ref. VVAR02607



# VONDOM

white(black edge)

ecru(black edge)

black(black edge)

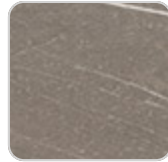
HPL black edge

Solid Core

Ref. VVAR02608



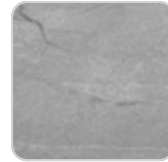
ecru stone



tortora stone



black stone



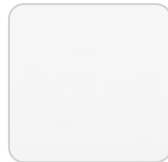
gray stone



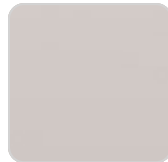
white stone



smoked



white (white edge)



ecru



tortora



cream



garnet



brown



green



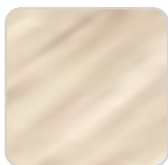
blue



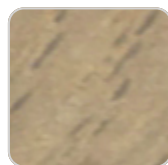
anthracite

Solid Core wood

Ref. VVAR02608



oak1



oak2

Dekton

Ref. VVAR02840

# VONDOM



kelya



entzo



danae

## Ambients

---

