

Frame aluminium table 140x60x105

by Ramón Esteve

Frame, outdoor collection by Ramon Esteve, comes from generating serene and timeless shapes using the framework as elementary geometry. The endless possibilities offered by the material using advanced technology, was the motivation to explore the limits.

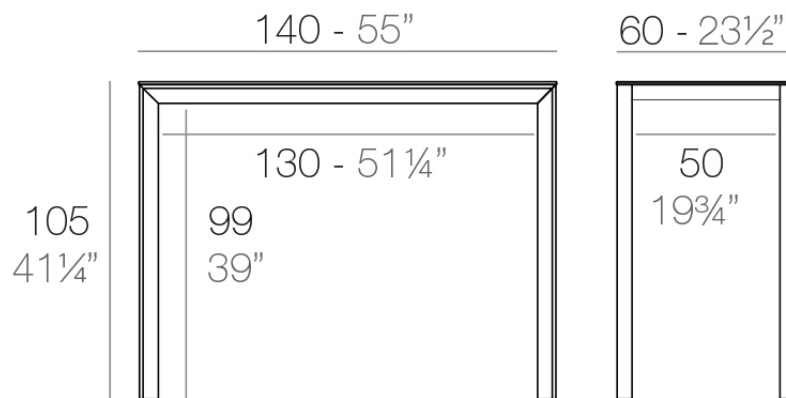


Info

Description

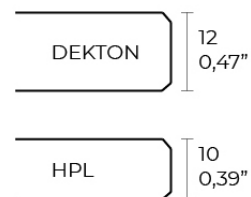
Extruded aluminum with cast lacquered aluminum base. HPL Table top ó Dekton Table top. Item suitable for indoor and outdoor use. HPL Table top.

Weight: 25.58 Kg



FRAME Mesa Alta Aluminio 140 x 60

FRAME Bar Table Aluminium 55" x 23 1/2"



Finishes

finishes

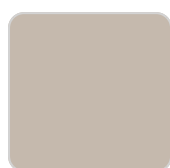
ALUMINIUM
Ref. 54243FB



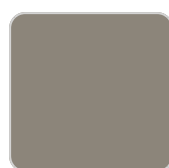
white



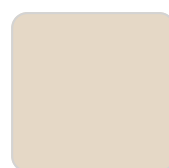
smoked



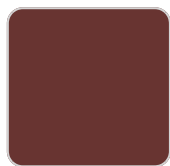
ecru



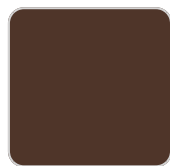
tortora



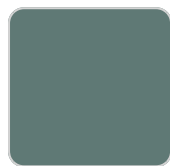
cream



garnet



brown



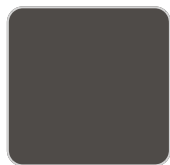
green



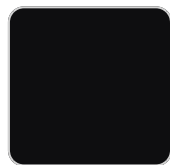
blue



gray



anthracite

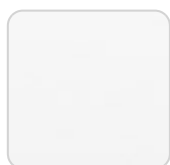


black

Lacquered aluminium profile.

tabletops

HPL
Ref. VVAR02587



VONDOM

white(black edge)

ecru(black edge)

black(black edge)

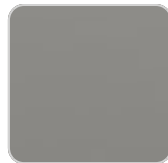
HPL black edge

Solid Core

Ref. VVAR02588



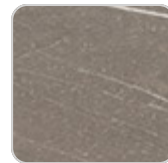
white stone



smoked



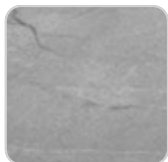
ecru stone



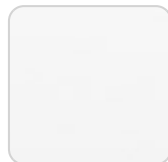
tortora stone



black stone



gray stone



white (white edge)



ecru



tortora



cream



garnet



brown



green



blue



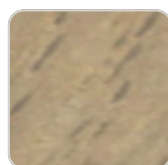
anthracite

Solid Core wood

Ref. VVAR02588



oak1



oak2

Dekton

Ref. VVAR02837

VONDOM



entzo



danae



kelya

Ambients

