

## Frame aluminium table 300x120x74

by Ramón Esteve

Frame, outdoor collection by Ramon Esteve, comes from generating serene and timeless shapes using the framework as elementary geometry. The endless possibilities offered by the material using advanced technology, was the motivation to explore the limits.



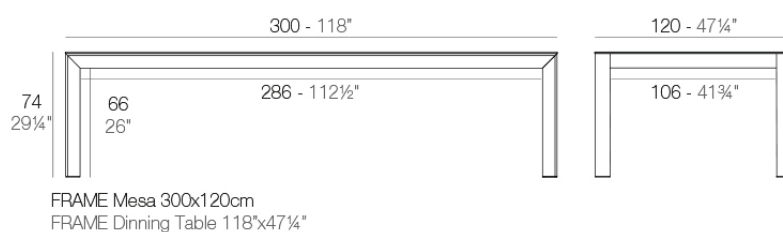
## Info

---

### Description

Extruded aluminum with cast lacquered aluminum base. HPL Table top ó Dekton Table top. Item suitable for indoor and outdoor use. HPL Table top.

Weight: 70.7 Kg



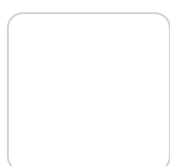
## Finishes

---

### finishes

---

ALUMINIUM  
Ref. 54242FB



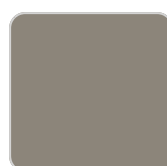
white



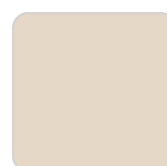
ecru



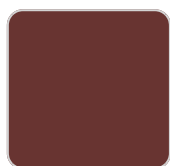
smoked



tortora



cream



garnet



brown



green



blue



gray



anthracite



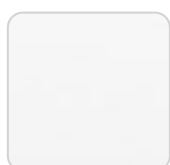
black

Lacquered aluminium profile.

### tabletops

---

HPL  
Ref. VVAR02597



# VONDOM

white(black edge)

ecru(black edge)

black(black edge)

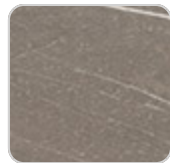
HPL black edge

Solid Core

Ref. VVAR02598



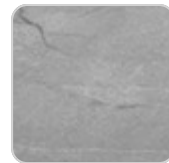
ecru stone



tortora stone



black stone



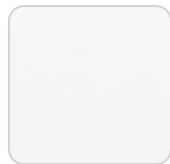
gray stone



white stone



smoked



white (white edge)



ecru



tortora



cream



garnet



brown



green



blue



anthracite

Solid Core wood

Ref. VVAR02598



oak1



oak2

## Ambients

---

