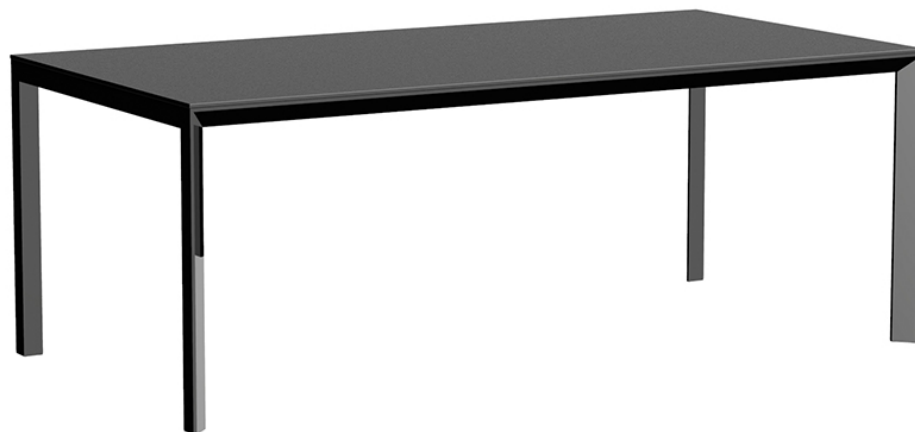


Frame aluminium table 200x100x74

by Ramón Esteve

Frame, outdoor collection by Ramon Esteve, comes from generating serene and timeless shapes using the framework as elementary geometry. The endless possibilities offered by the material using advanced technology, was the motivation to explore the limits.

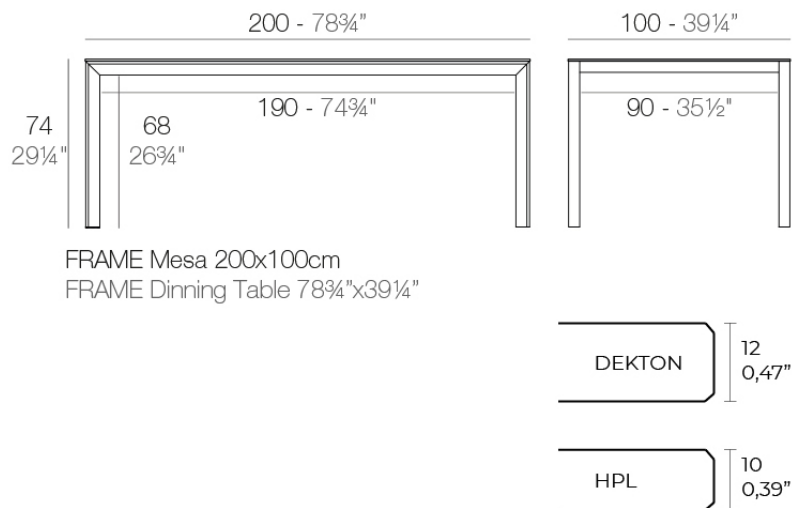


Info

Description

Extruded aluminum with cast lacquered aluminum base. HPL Table top ó Dekton Table top. Item suitable for indoor and outdoor use. HPL Table top.

Weight: 39.15 Kg



Finishes

finishes

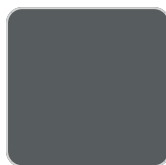
ALUMINIUM
Ref. 54241FM



white



british gray



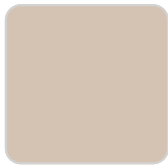
traffic gray



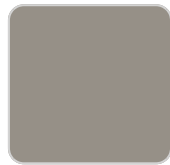
black



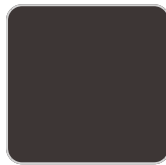
ecru



crema



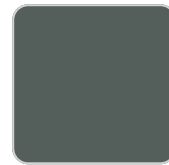
castoro fiber



cacao



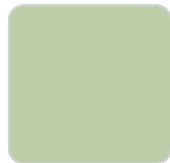
notte blue



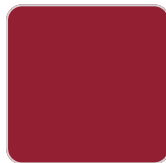
modo green



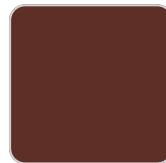
pickle



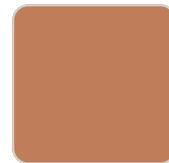
almond



red



purjai red



melon



mostaza

Lacquered aluminium profile.

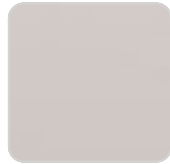
tabletops

HPL
Ref. VVAR02595

VONDOM



black(black edge)



ecru(black edge)

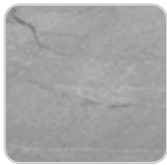


white(black edge)

HPL black edge

Solid Core

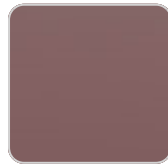
Ref. VVAR02596



yule gray



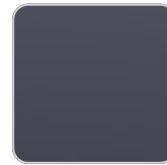
modo green



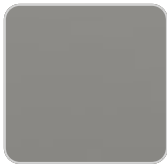
purjai red



gioia bianco



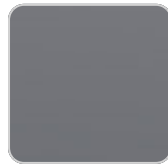
notte blue



british gray



white (white edge)



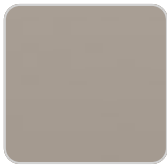
traffic gray



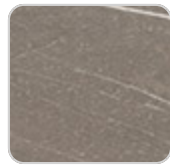
crema



yule brown



castoro fiber



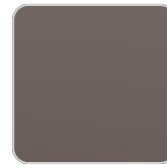
pulpis gray



piombo gray



kandia black



cacao

Dekton

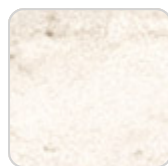
Ref. VVAR02839



kelya



entzo



danae

Ambients

