

## Frame aluminium table 160x100x74

by Ramón Esteve

Frame, outdoor collection by Ramon Esteve, comes from generating serene and timeless shapes using the framework as elementary geometry. The endless possibilities offered by the material using advanced technology, was the motivation to explore the limits.



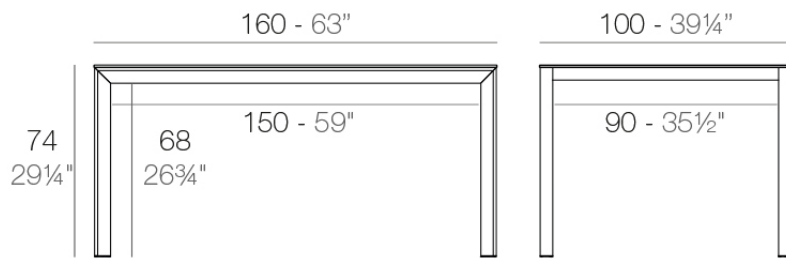
## Info

---

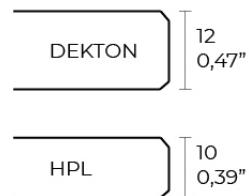
### Description

Extruded aluminum with cast lacquered aluminum base. HPL Table top ó Dekton Table top. Item suitable for indoor and outdoor use. HPL Table top.

Weight: 32.65 Kg



FRAME Mesa 160x100cm  
FRAME Dinning Table 63"x39 1/4"



## Finishes

---

### finishes

---

ALUMINIUM  
Ref. 54240FB



white



smoked



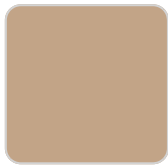
ecru



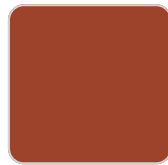
tortora



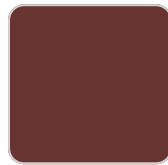
cream



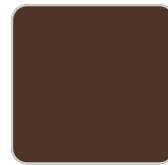
camel



clay



garnet



brown



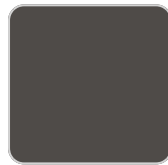
green



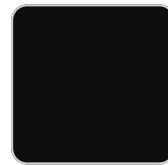
blue



gray



anthracite



black



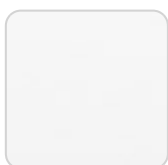
ocean

Lacquered aluminium profile.

### tabletops

---

HPL  
Ref. VVAR02593



# VONDOM

white(black edge)

ecru(black edge)

black(black edge)

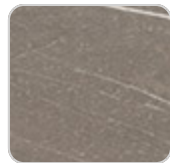
HPL black edge

Solid Core

Ref. VVAR02594



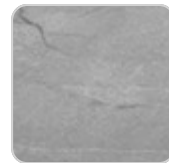
ecru stone



tortora stone



black stone



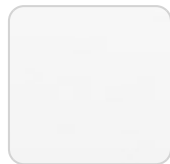
gray stone



white stone



smoked



white (white edge)



ecru



tortora



cream



garnet



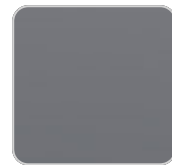
brown



green



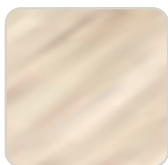
blue



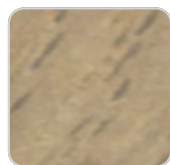
anthracite

Solid Core wood

Ref. VVAR02594



oak1



oak2



## Ambients

---

