

Frame aluminium table 180x80x74

by Ramón Esteve

Frame, outdoor collection by Ramon Esteve, comes from generating serene and timeless shapes using the framework as elementary geometry. The endless possibilities offered by the material using advanced technology, was the motivation to explore the limits.

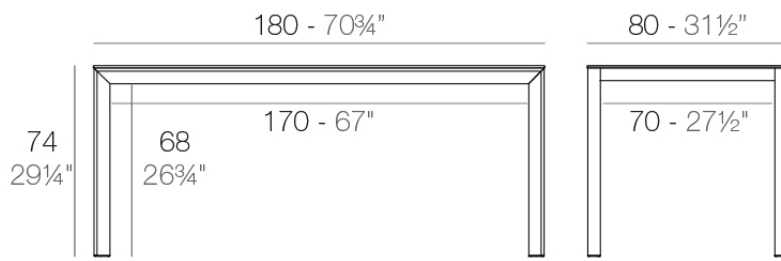


Info

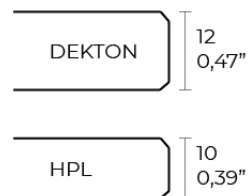
Description

Extruded aluminum with cast lacquered aluminum base. HPL Table top ó Dekton Table top. Item suitable for indoor and outdoor use. HPL Table top.

Weight: 30.47 Kg



FRAME Mesa 180x80cm
FRAME Dinning Table 70 3/4"x31 1/2"



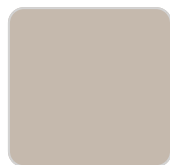
Finishes

finishes

ALUMINIUM
Ref. 54237FB



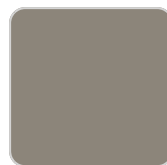
white



ecru



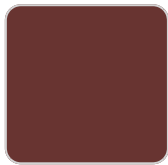
smoked



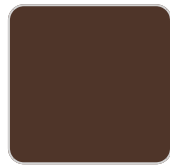
tortora



cream



garnet



brown



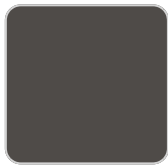
green



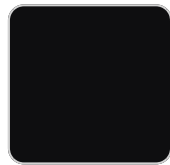
blue



gray



anthracite

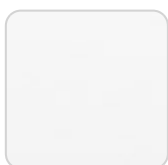


black

Lacquered aluminium profile.

tabletops

HPL
Ref. VVAR02577



VONDOM

white(black edge)

ecru(black edge)

black(black edge)

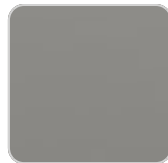
HPL black edge

Solid Core

Ref. VVAR02578



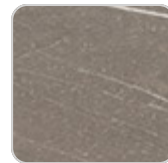
white stone



smoked



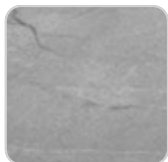
ecru stone



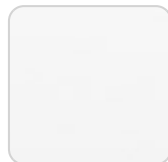
tortora stone



black stone



gray stone



white (white edge)



ecru



tortora



cream



garnet



brown



green



blue



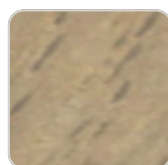
anthracite

Solid Core wood

Ref. VVAR02578



oak1



oak2

Dekton

Ref. VVAR02834

VONDOM



kelya



entzo



danae

Ambients

