

## Frame aluminium table 160x80x74

by Ramón Esteve

Frame, outdoor collection by Ramon Esteve, comes from generating serene and timeless shapes using the framework as elementary geometry. The endless possibilities offered by the material using advanced technology, was the motivation to explore the limits.



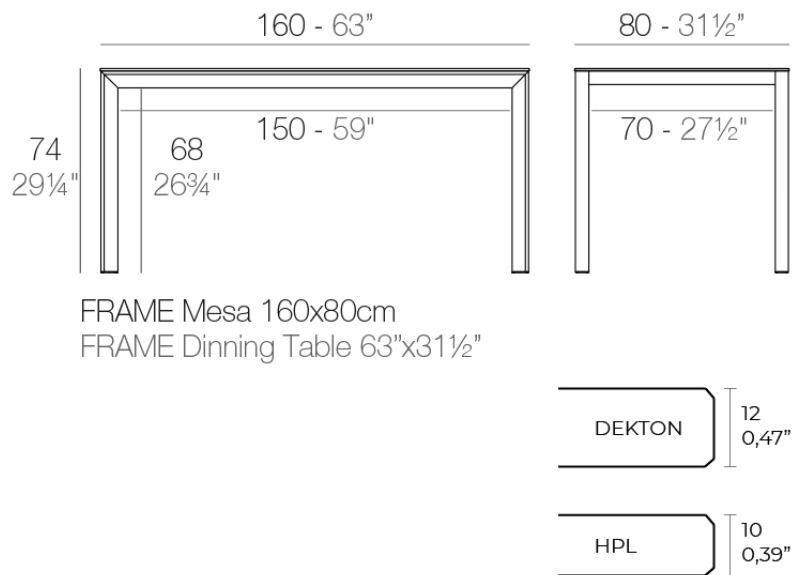
## Info

---

### Description

Extruded aluminum with cast lacquered aluminum base. HPL Table top ó Dekton Table top. Item suitable for indoor and outdoor use. HPL Table top.

Weight: 27.72 Kg



## Finishes

---

### finishes

---

ALUMINIUM  
Ref. 54236FB



white



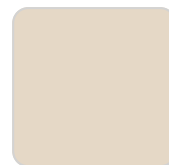
smoked



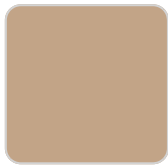
ecru



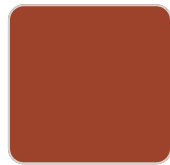
tortora



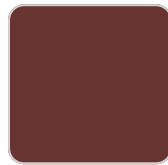
cream



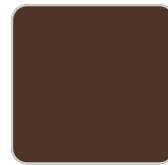
camel



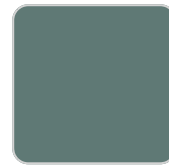
clay



garnet



brown



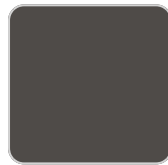
green



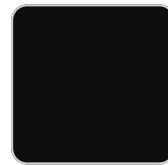
blue



gray



anthracite



black



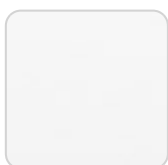
ocean

Lacquered aluminium profile.

### tabletops

---

HPL  
Ref. VVAR02573



# VONDOM

white(black edge)

ecru(black edge)

black(black edge)

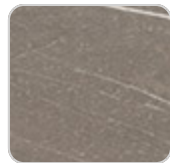
HPL black edge

Solid Core

Ref. VVAR02574



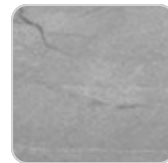
ecru stone



tortora stone



black stone



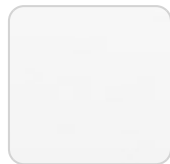
gray stone



white stone



smoked



white (white edge)



ecru



tortora



cream



garnet



brown



green



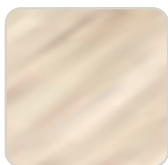
blue



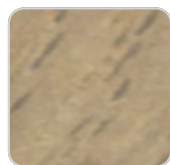
anthracite

Solid Core wood

Ref. VVAR02574



oak1



oak2

## Ambients

---

