

## Frame aluminium table 100x100x74

by Ramón Esteve

Frame, outdoor collection by Ramon Esteve, comes from generating serene and timeless shapes using the framework as elementary geometry. The endless possibilities offered by the material using advanced technology, was the motivation to explore the limits.



## Info

---

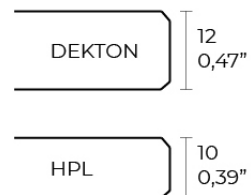
### Description

Extruded aluminum with cast lacquered aluminum base. HPL Table top ó Dekton Table top. Item suitable for indoor and outdoor use. HPL Table top.

Weight: 22.92 Kg



FRAME Mesa 100x100cm  
FRAME Dinning Table 39 1/4"x39 1/4"



## Finishes

---

### finishes

---

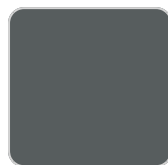
ALUMINIUM  
Ref. 54234FM



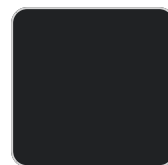
white



british gray



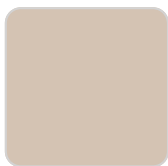
traffic gray



black



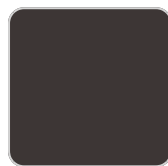
ecru



crema



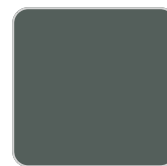
castoro fiber



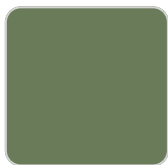
cacao



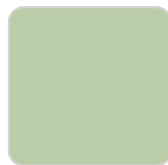
notte blue



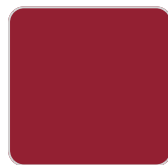
modo green



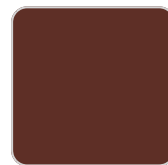
pickle



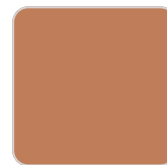
almond



red



purjai red



melon



mostaza

Lacquered aluminium profile.

### tabletops

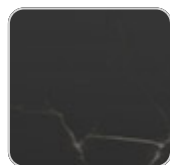
---

Solid Core  
Ref. VVAR02564

# VONDOM



crema



kandia black



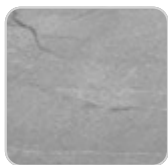
cacao



castoro fiber



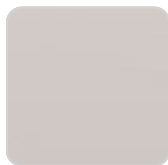
yule brown



yule gray



modo green



piombo gray



pulpis gray



gioia bianco



purjai red



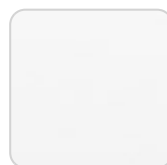
british gray



notte blue



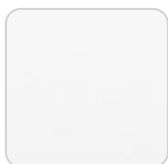
traffic gray



white (white edge)

## HPL

Ref. VVAR02563



white(black edge)



black(black edge)



ecru(black edge)

## HPL black edge

## Dekton

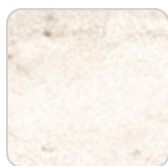
Ref. VVAR02831



kelya



entzo



danae

## Ambients

---

