

Frame aluminium table 90x90x74

by Ramón Esteve

Frame, outdoor collection by Ramon Esteve, comes from generating serene and timeless shapes using the framework as elementary geometry. The endless possibilities offered by the material using advanced technology, was the motivation to explore the limits.



Info

Description

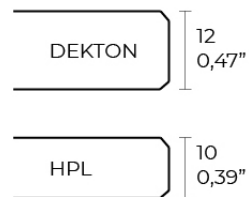
Extruded aluminum with cast lacquered aluminum base. HPL Table top ó Dekton Table top. Item suitable for indoor and outdoor use. HPL Table top.

Weight: 19.63 Kg



FRAME Mesa 90x90cm

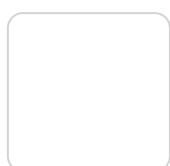
FRAME Dinning Table 35 1/2"x35 1/2"



Finishes

finishes

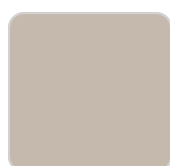
ALUMINIUM
Ref. 54233FB



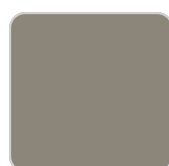
white



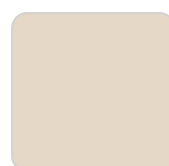
smoked



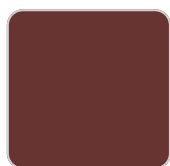
ecru



tortora



cream



garnet



brown



green



blue



gray



anthracite

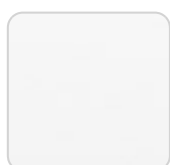


black

Lacquered aluminium profile.

tabletops

HPL
Ref. VVAR02558



VONDOM

white(black edge)

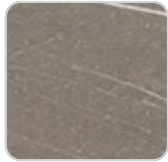
ecru(black edge)

black(black edge)

HPL black edge

Solid Core

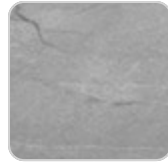
Ref. VVAR02559



tortora stone



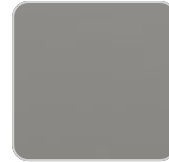
black stone



gray stone



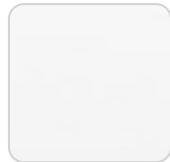
white stone



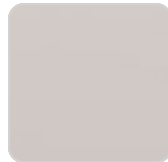
smoked



ecru stone



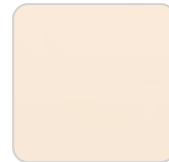
white (white edge)



ecru



tortora



cream



garnet



brown



green



blue



anthracite

Dekton

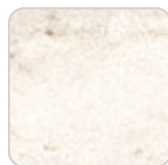
Ref. VVAR02830



kelya



entzo



danae

Ambients

